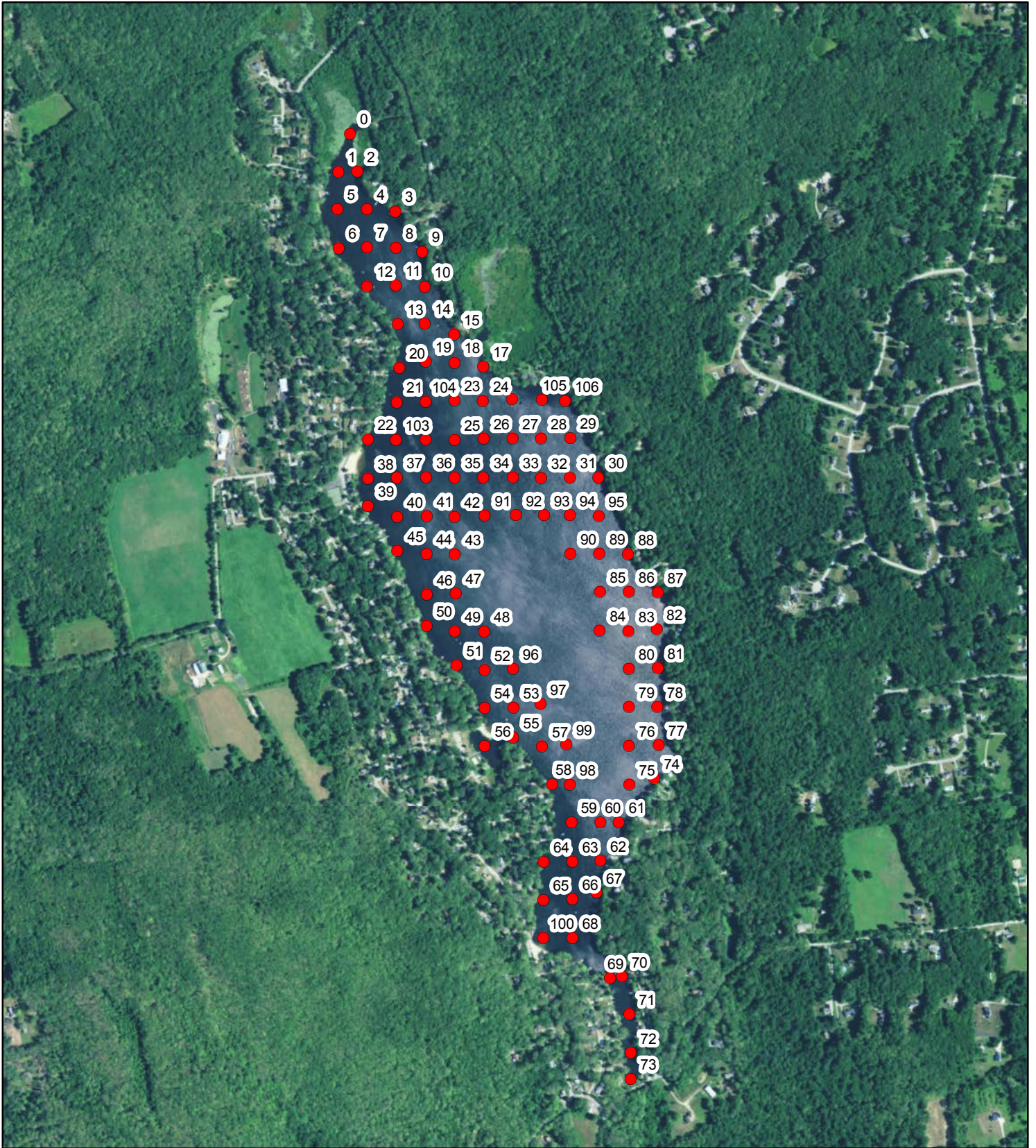


APPENDIX A

Abundance Maps

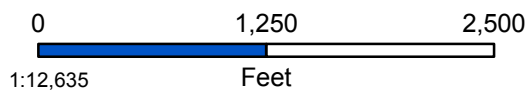
Figure 1: Data Points



Lake Hayward
East Haddam, CT

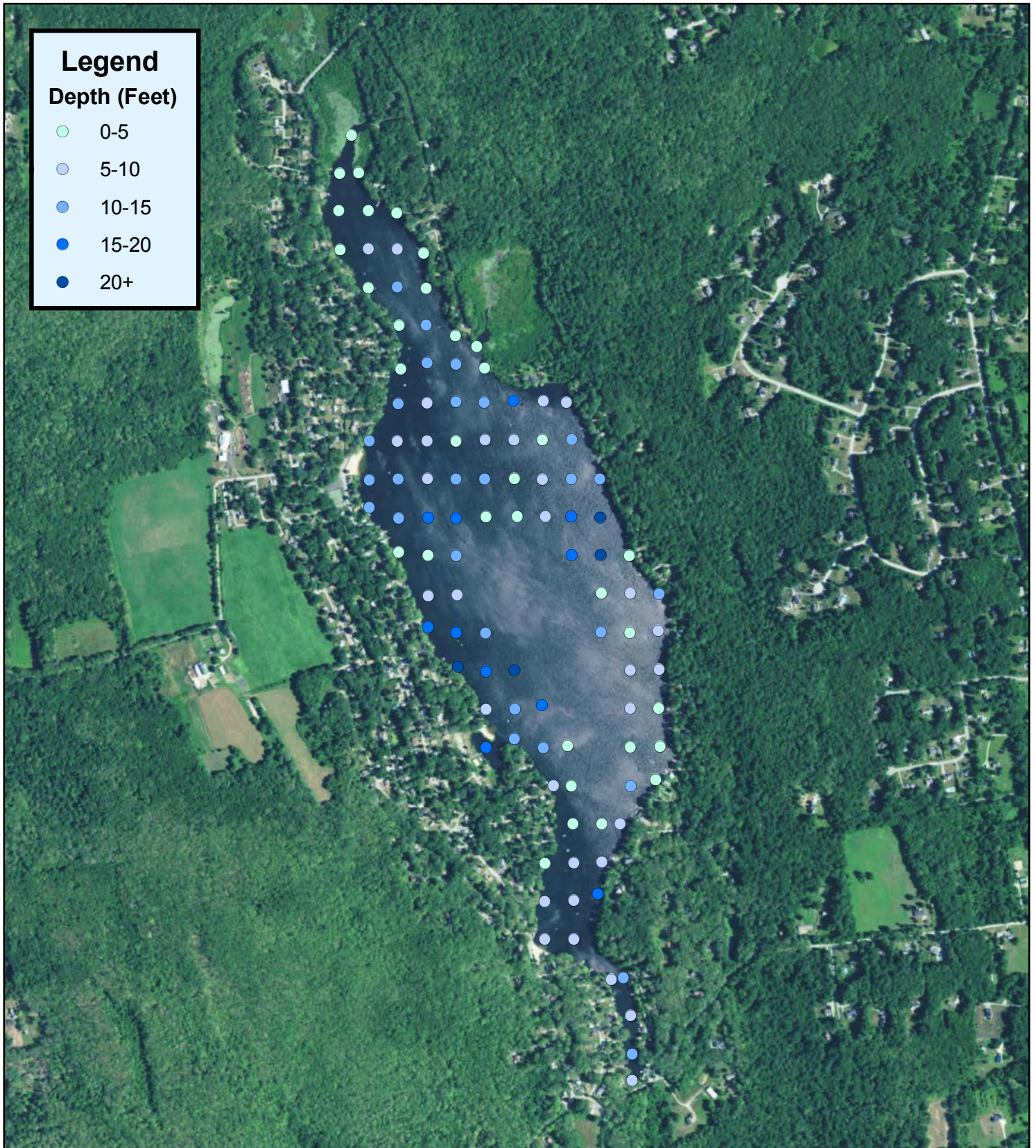


Lake Hayward



Map Date: 12/22/20
Prepared by: ALM
Office: SHREWSBURY, MA

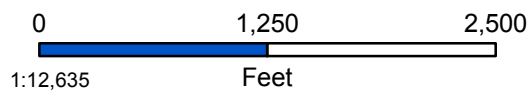
Figure 2: Depth



Lake Hayward
East Haddam, CT

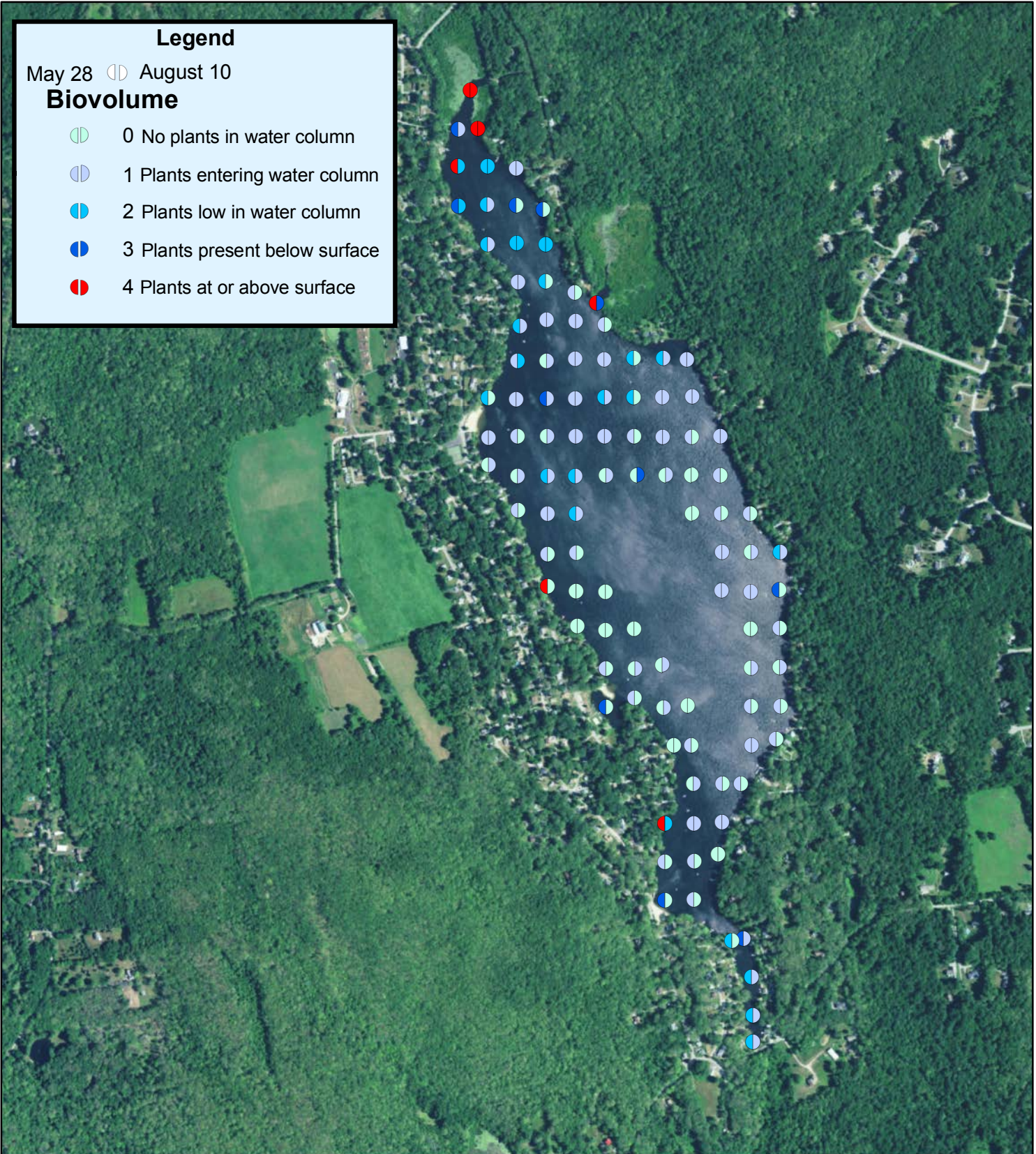


Lake Hayward



Map Date: 12/22/20
Prepared by: ALM
Office: SHREWSBURY, MA

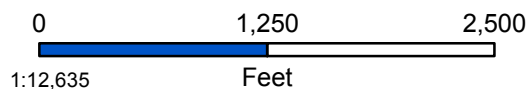
Figure 3: Biovolume of Data Points



Lake Hayward
East Haddam, CT

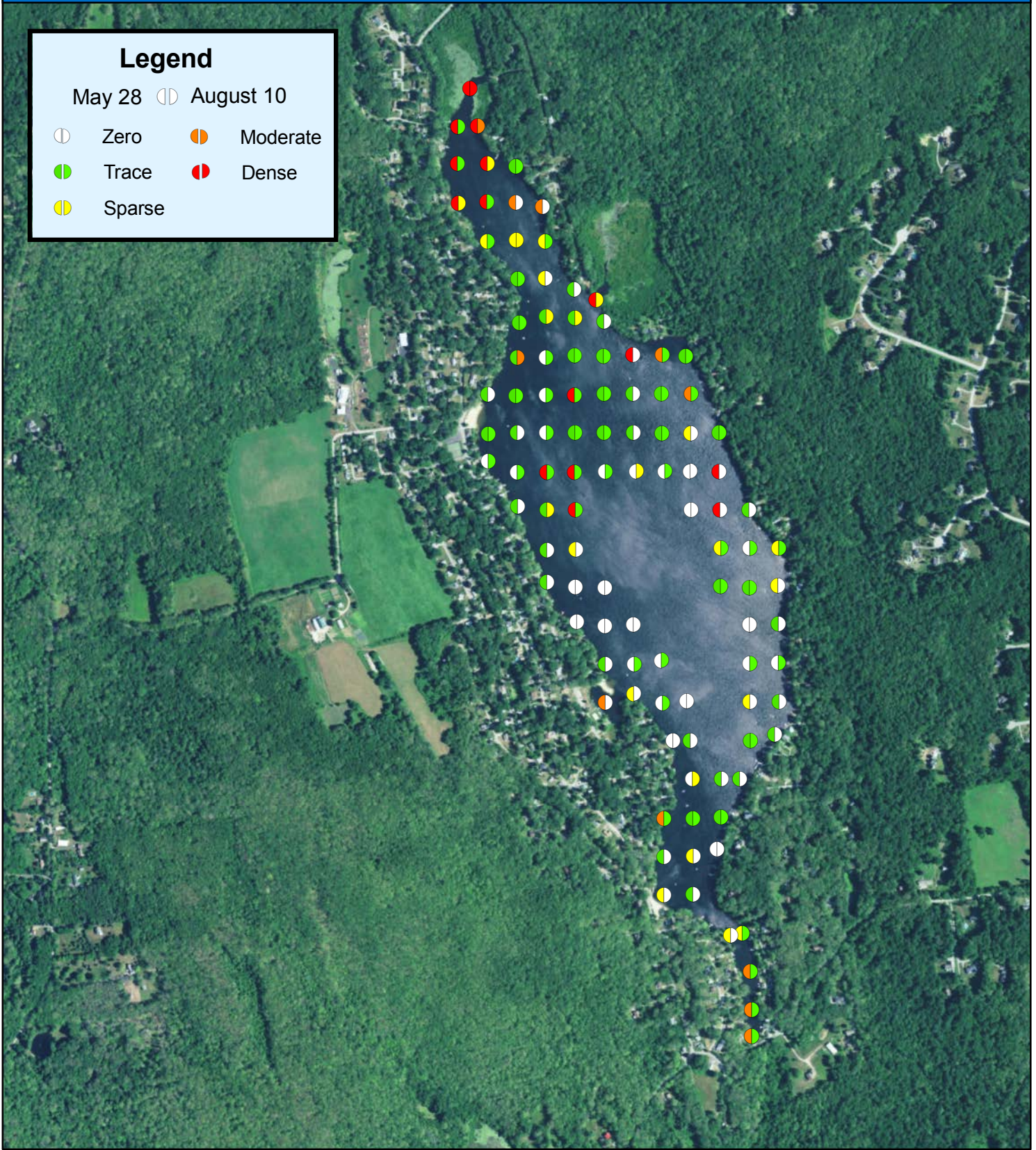


Lake Hayward



Map Date: 12/22/20
Prepared by: ALM
Office: SHREWSBURY, MA

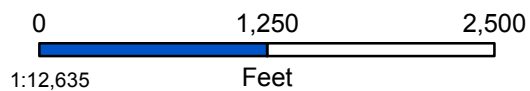
Figure 4: Percent Cover of All Submersed Aquatic Vegetation



Lake Hayward
East Haddam, CT

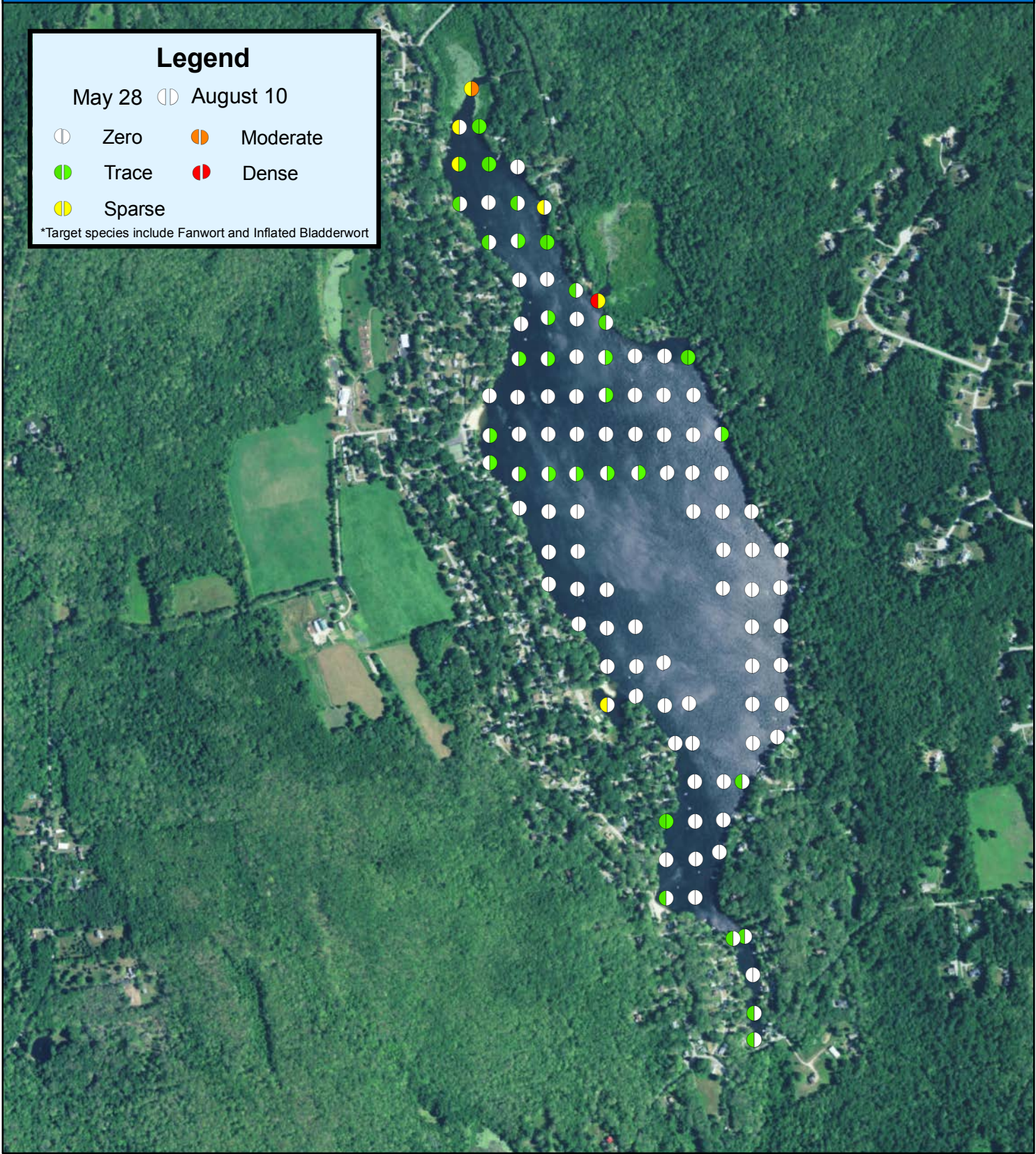


Lake Hayward



Map Date: 12/22/20
Prepared by: ALM
Office: SHREWSBURY, MA

Figure 5: Percent Cover of Target Submersed Aquatic Vegetation



Lake Hayward
East Haddam, CT

Lake Hayward

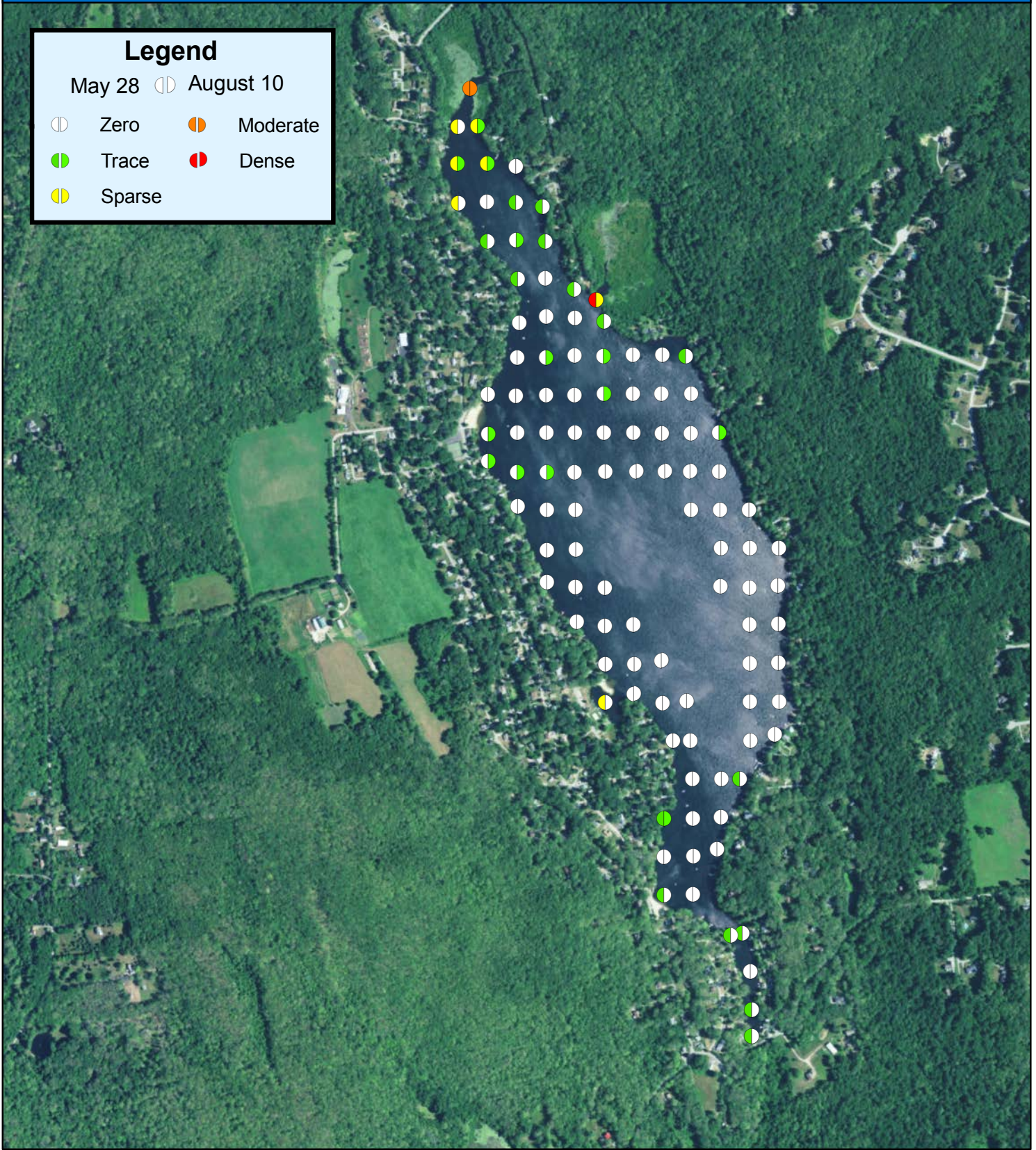
0 1,250 2,500

1:12,635 Feet

N

Map Date: 12/22/20
Prepared by: ALM
Office: SHREWSBURY, MA

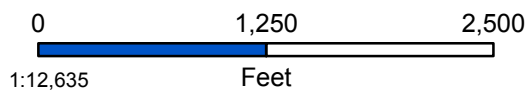
Figure 6: Pre-and-Post-Management Density of Fanwort (*C. caroliniana*)



Lake Hayward
East Haddam, CT

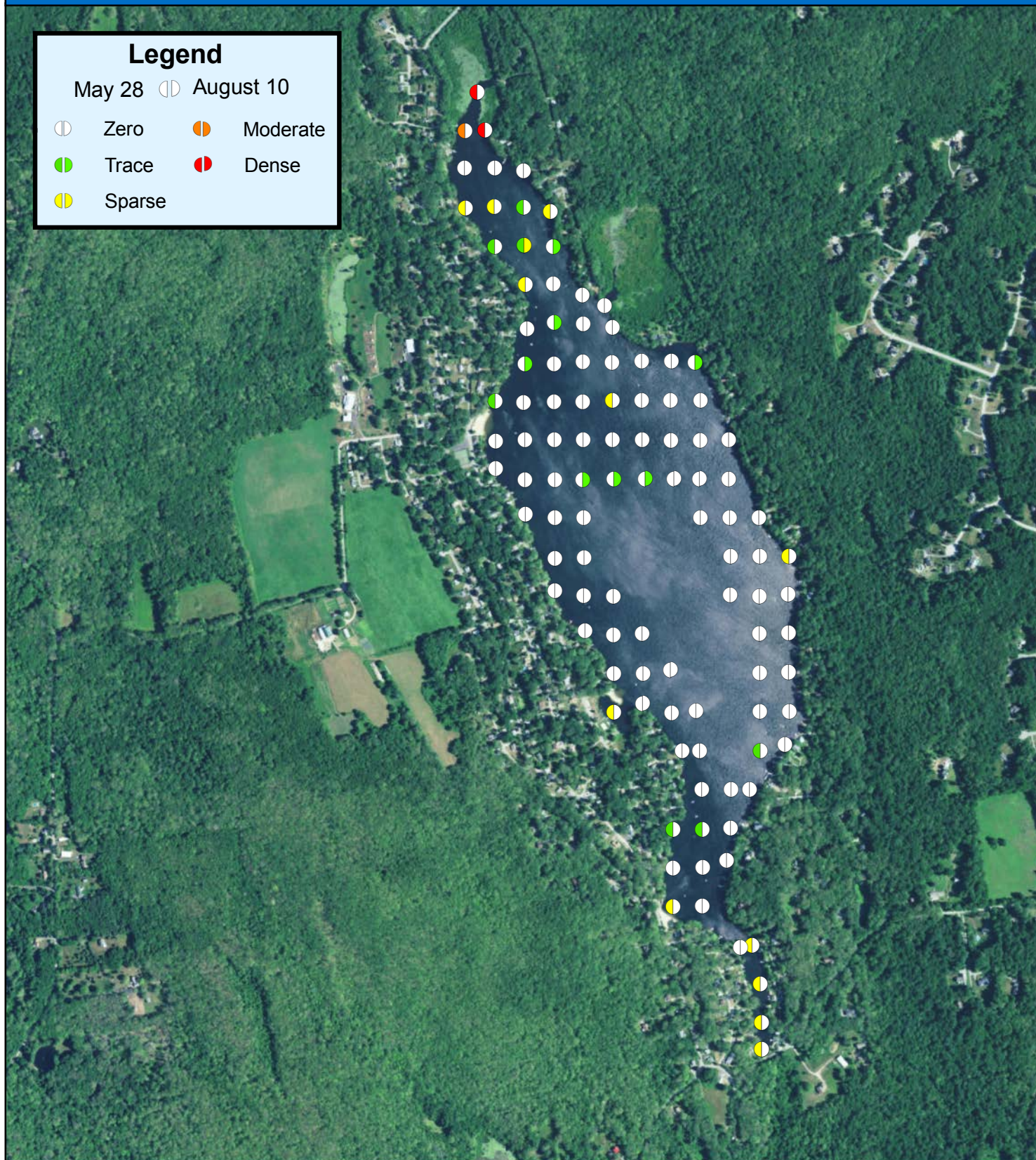


Lake Hayward

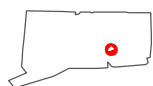


Map Date: 12/22/20
Prepared by: ALM
Office: SHREWSBURY, MA

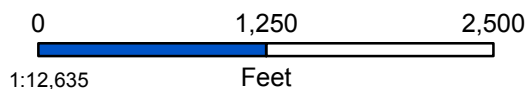
Figure 7: Pre-and-Post-Management Density of Inflated Bladderwort (*U. inflata*)



Lake Hayward
East Haddam, CT

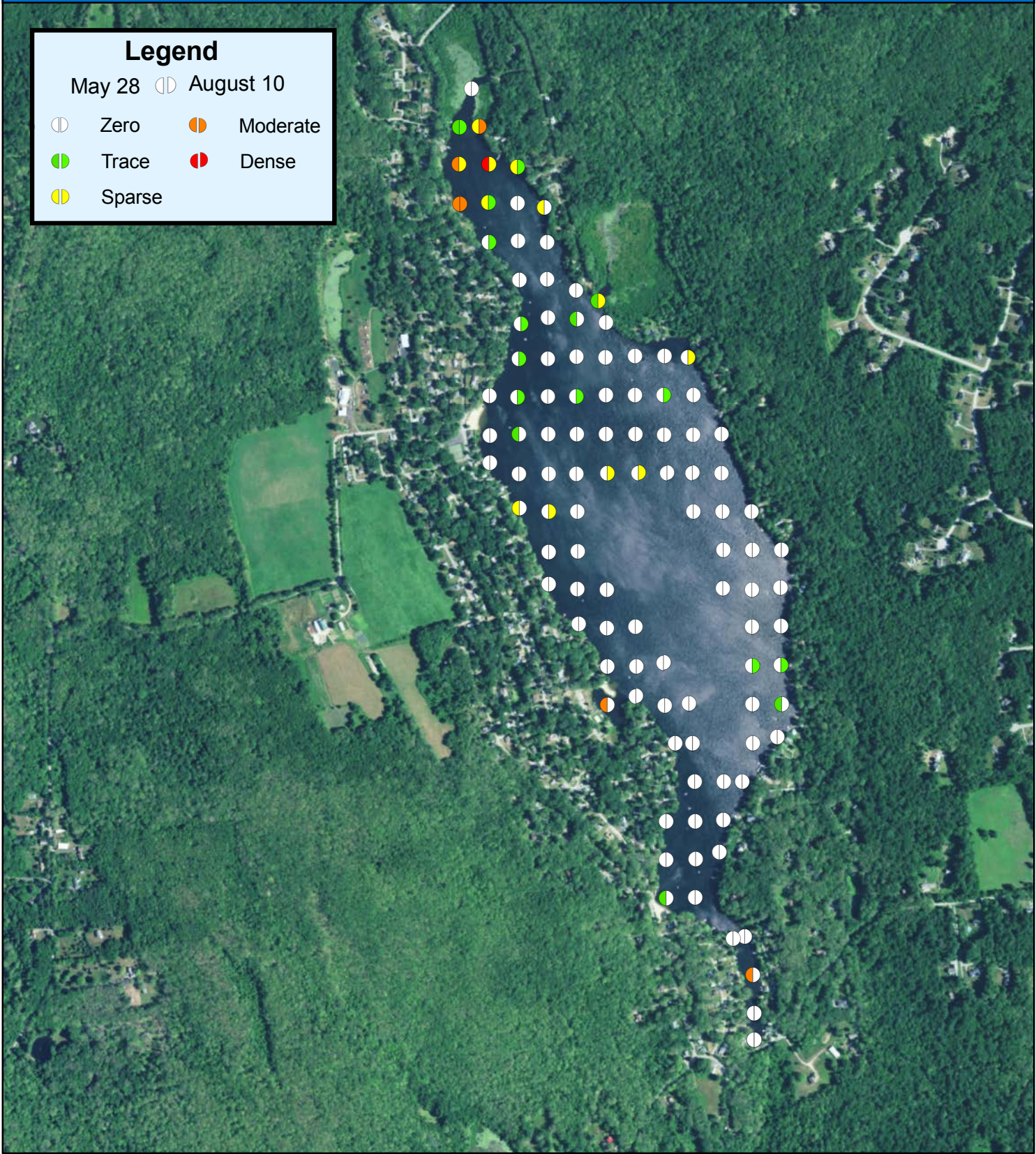


Lake Hayward

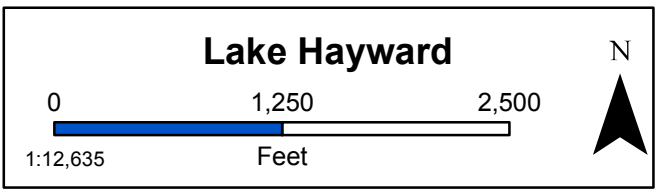


Map Date: 12/22/20
Prepared by: ALM
Office: SHREWSBURY, MA

Figure 8: Pre-and-Post-Management Density of Spikesedge (*Eleocharis spp.*)

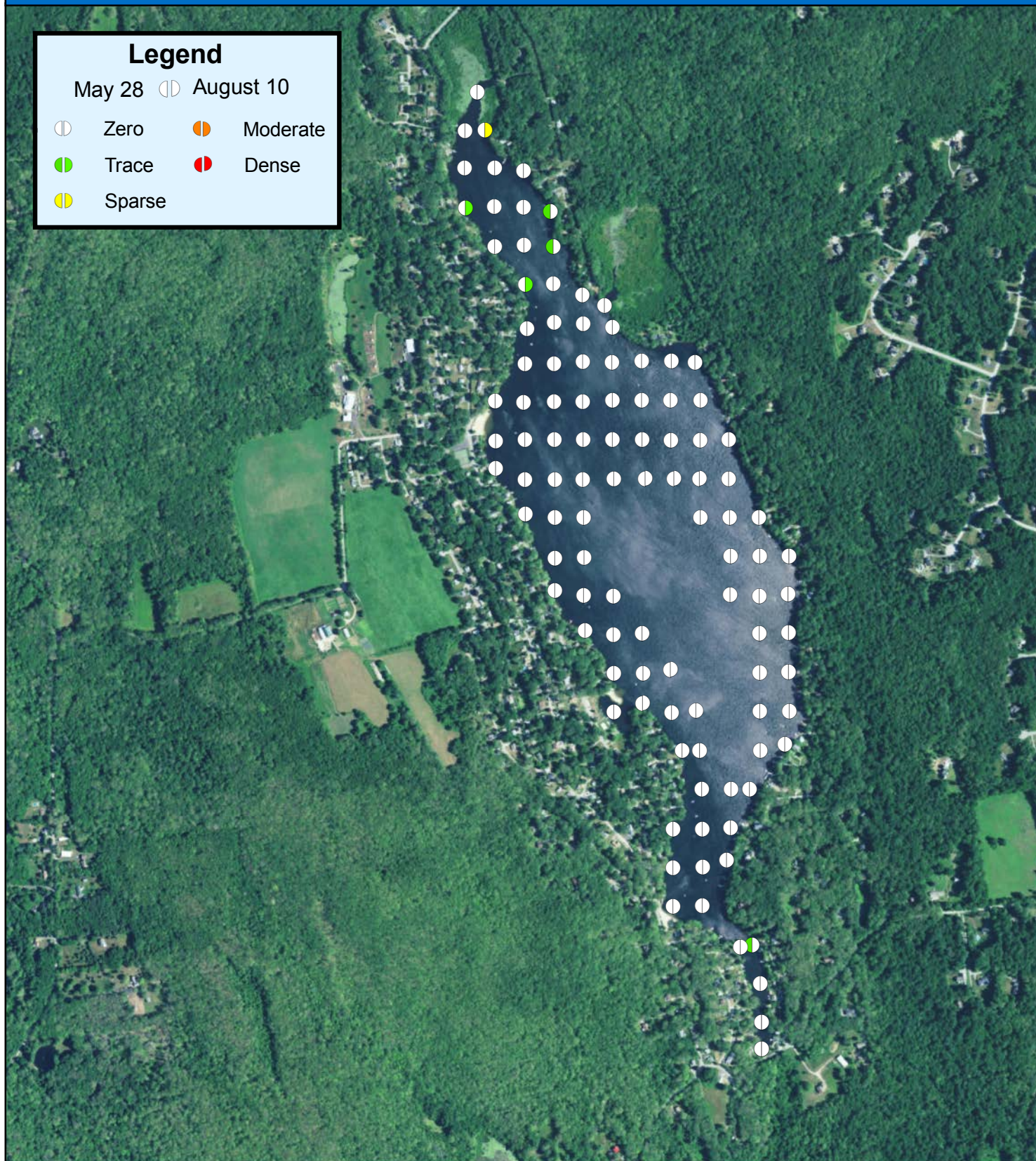


Lake Hayward
East Haddam, CT



Map Date: 12/22/20
Prepared by: ALM
Office: SHREWSBURY, MA

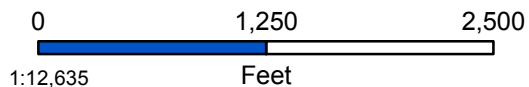
Figure 9: Pre-and-Post-Management Density of Common Bladderwort (*U. vulgaris*)



Lake Hayward
East Haddam, CT

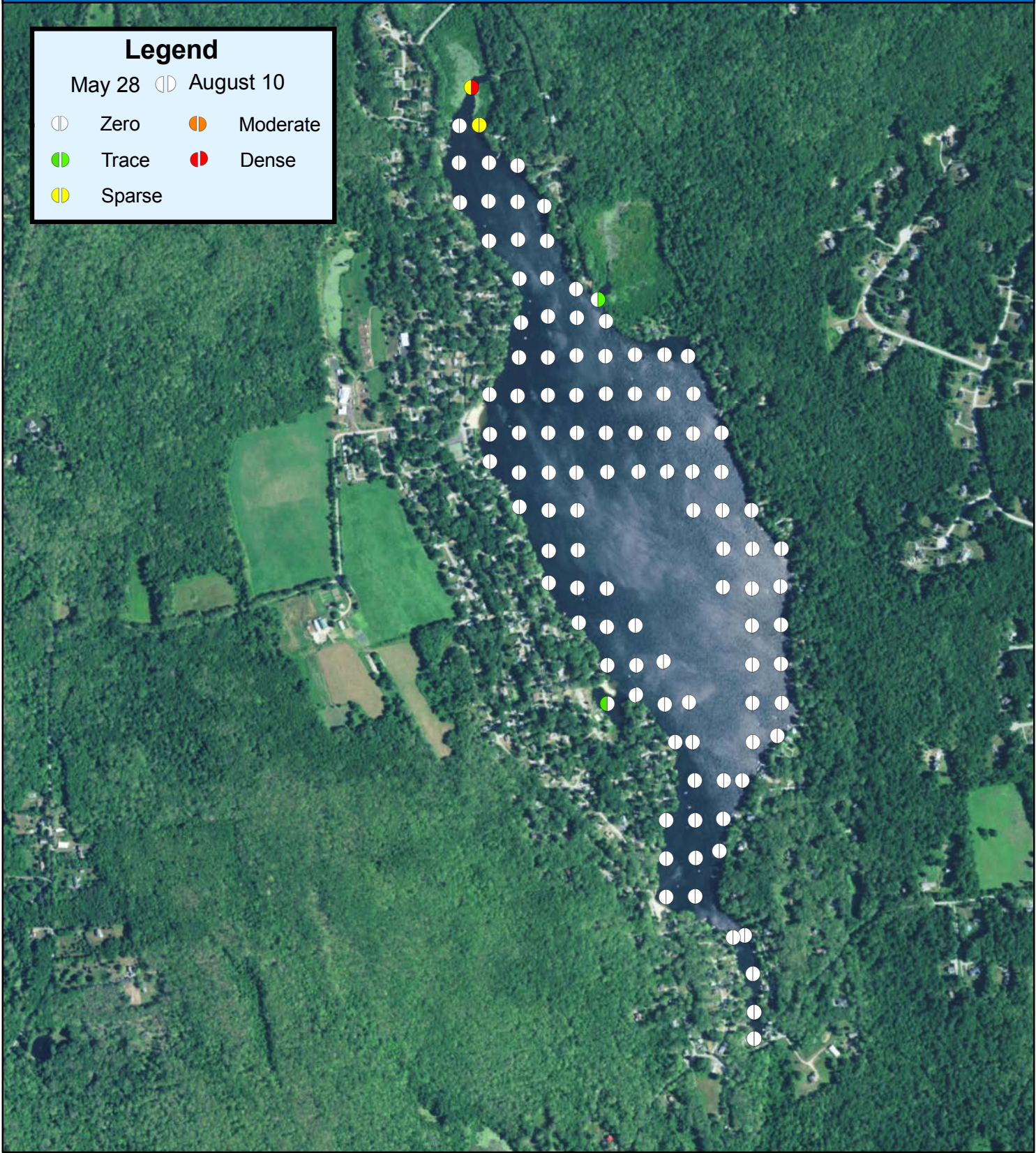


Lake Hayward



Map Date: 12/22/20
Prepared by: ALM
Office: SHREWSBURY, MA

Figure 10: Pre-and-Post-Management Density of Yellow Water-lily (*N. variegata*)



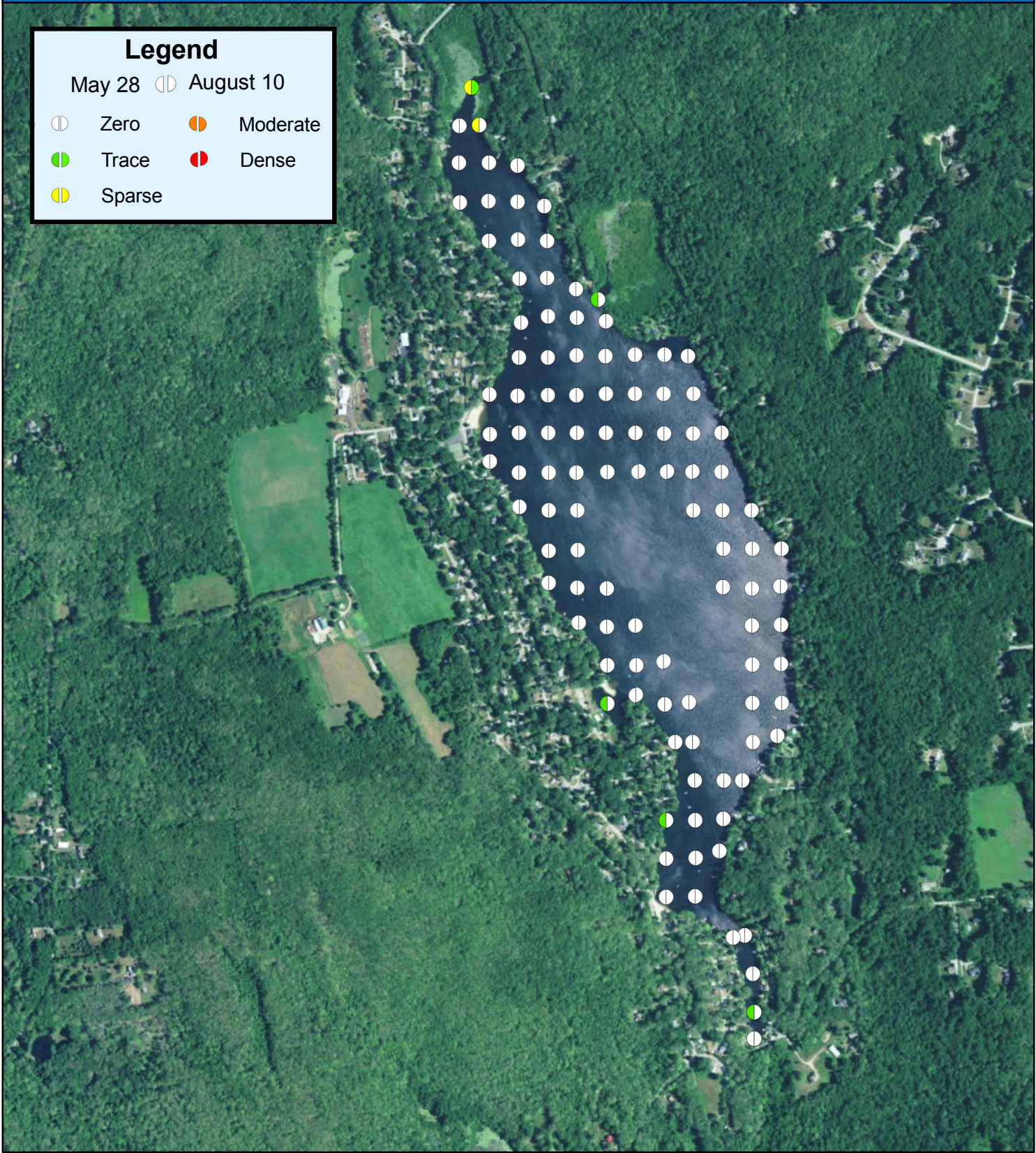
Lake Hayward
East Haddam, CT

Lake Hayward

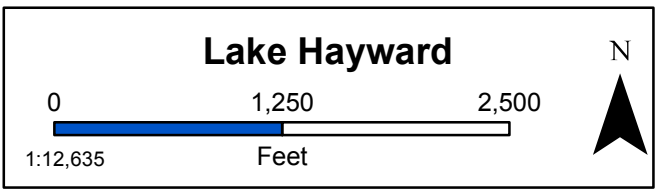
0 1,250 2,500
1:12,635 Feet

Map Date: 12/22/20
Prepared by: ALM
Office: SHREWSBURY, MA

Figure 11: Pre-and-Post-Management Density of White Water-lily (*N. odorata*)

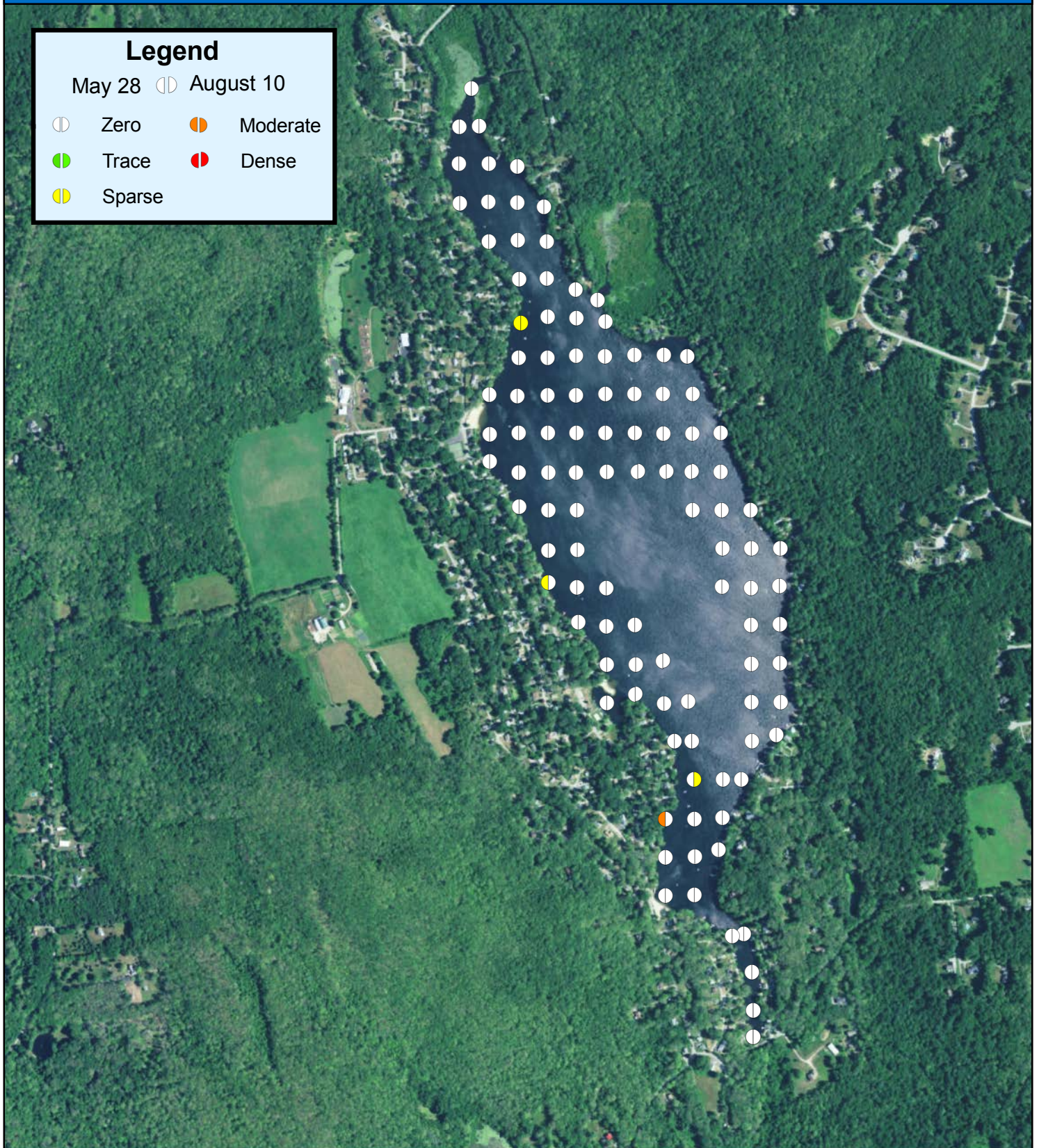


Lake Hayward
East Haddam, CT



Map Date: 12/22/20
Prepared by: ALM
Office: SHREWSBURY, MA

Figure 12: Pre-and-Post-Management Density of Pipewort (*Eriochaulon*)



Lake Hayward
East Haddam, CT

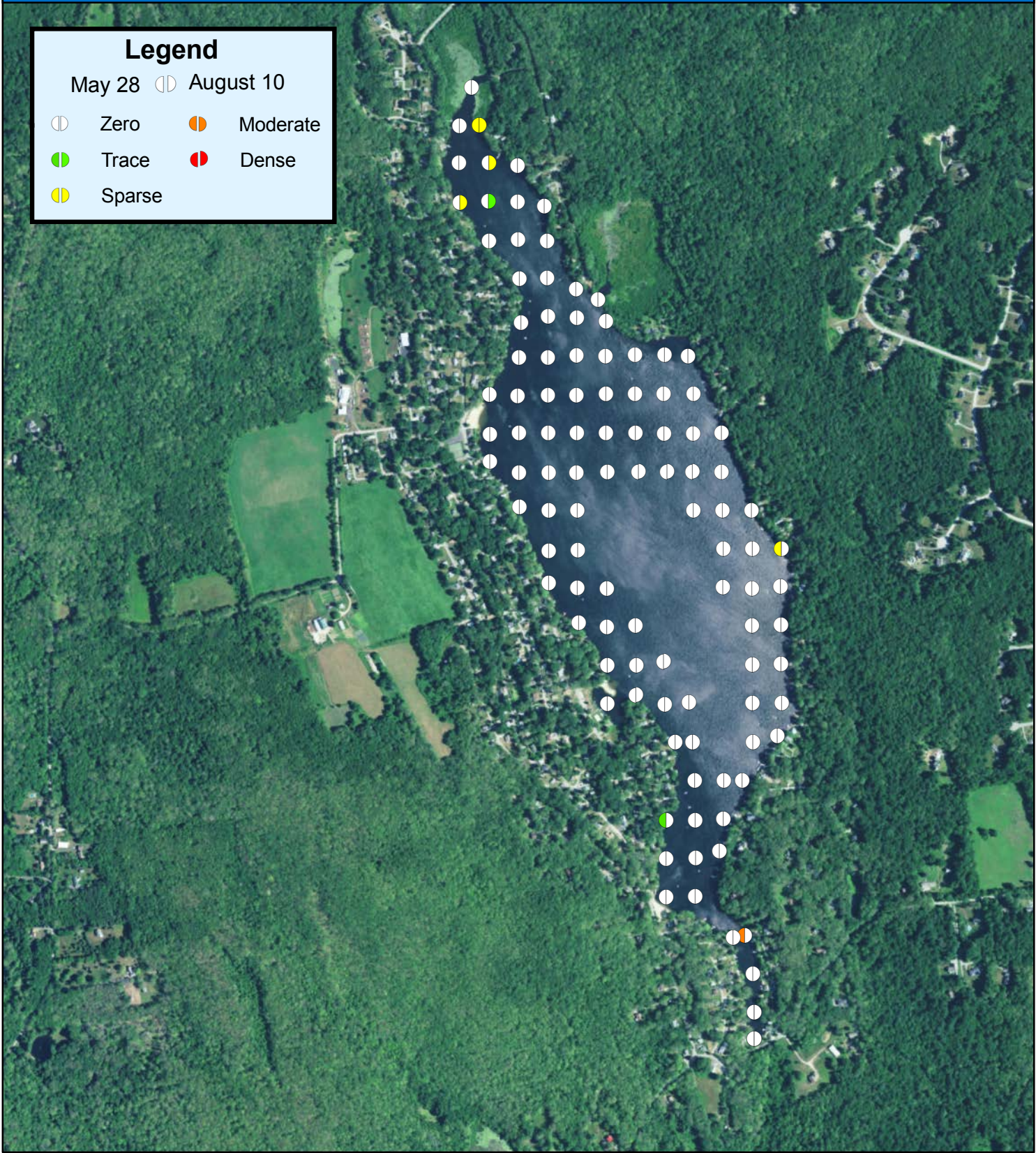
Lake Hayward

0 1,250 2,500
1:12,635 Feet

N

Map Date: 12/22/20
Prepared by: ALM
Office: SHREWSBURY, MA

Figure 13: Pre-and-Post-Management Density of Arrowhead (*Sagittaria latifolia*)



Lake Hayward
East Haddam, CT

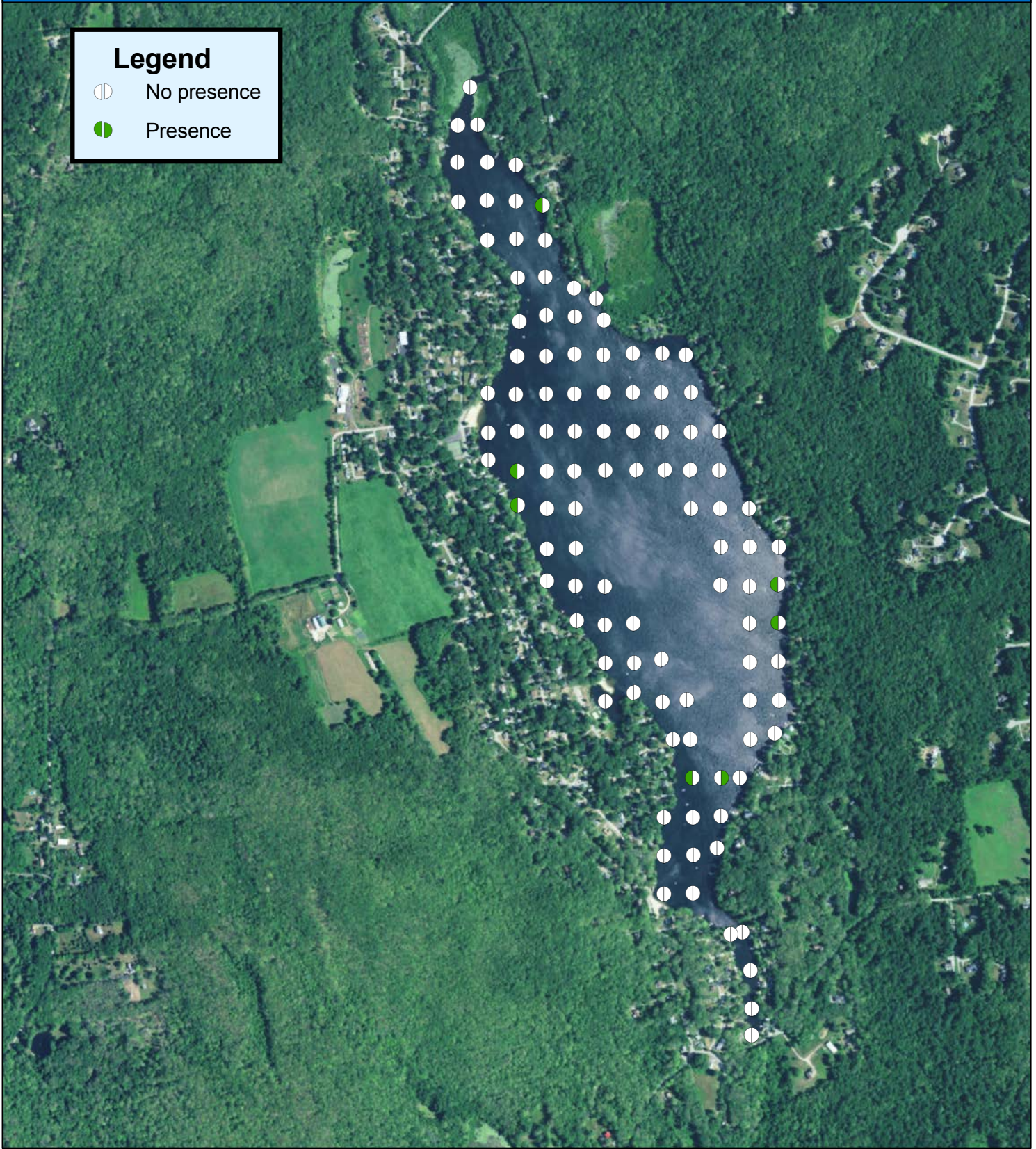
Lake Hayward

0 1,250 2,500
1:12,635 Feet

N

Map Date: 12/22/20
Prepared by: ALM
Office: SHREWSBURY, MA

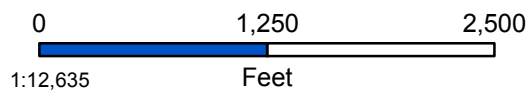
Figure 14: Pre-and-Post-Management Density of Filamentous Algae Species



Lake Hayward
East Haddam, CT

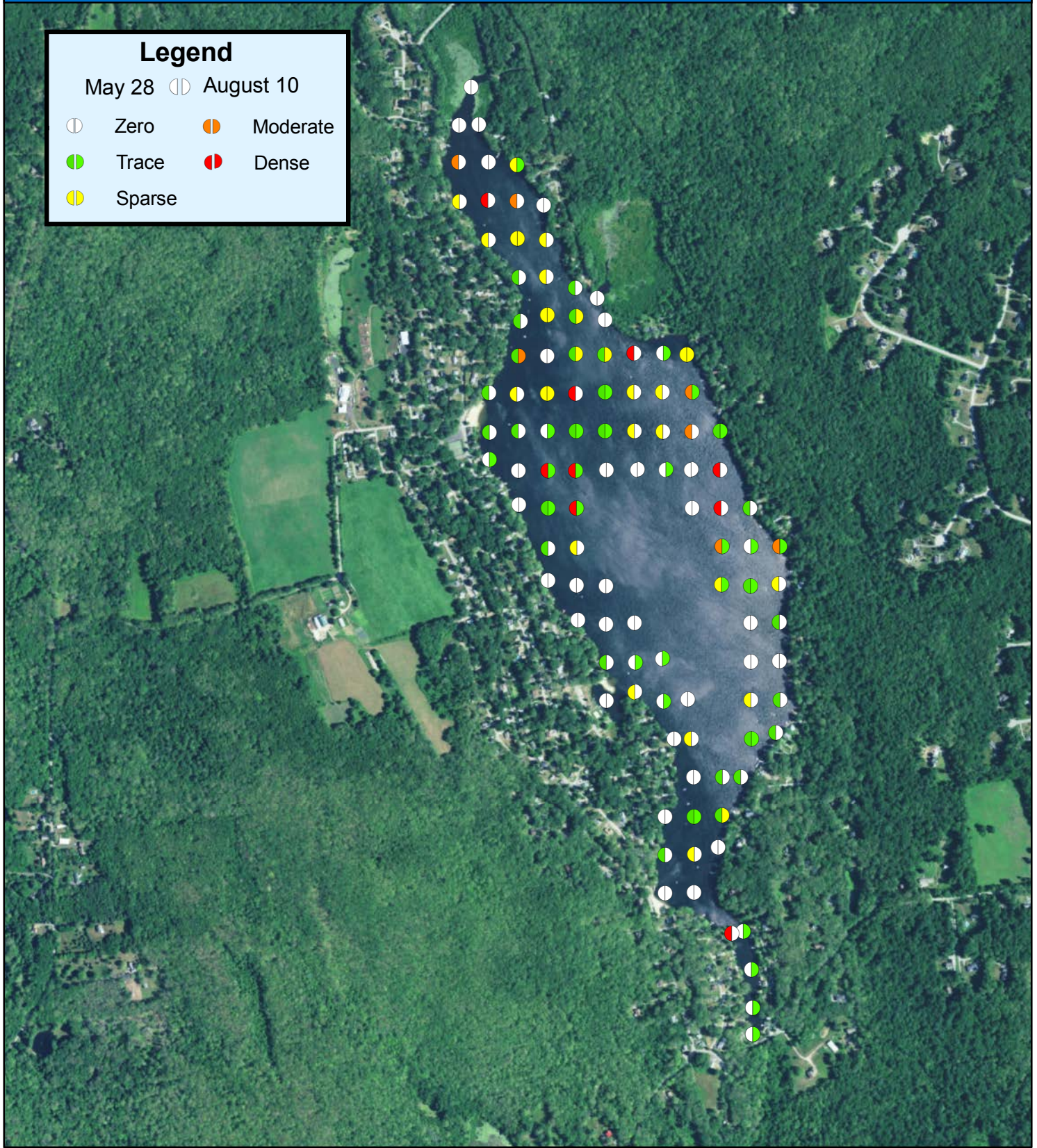


Lake Hayward



Map Date: 12/22/20
Prepared by: ALM
Office: SHREWSBURY, MA

Figure 15: Pre-and-Post-Management Density of Stonewort (*Nitella* spp.)



Lake Hayward
East Haddam, CT

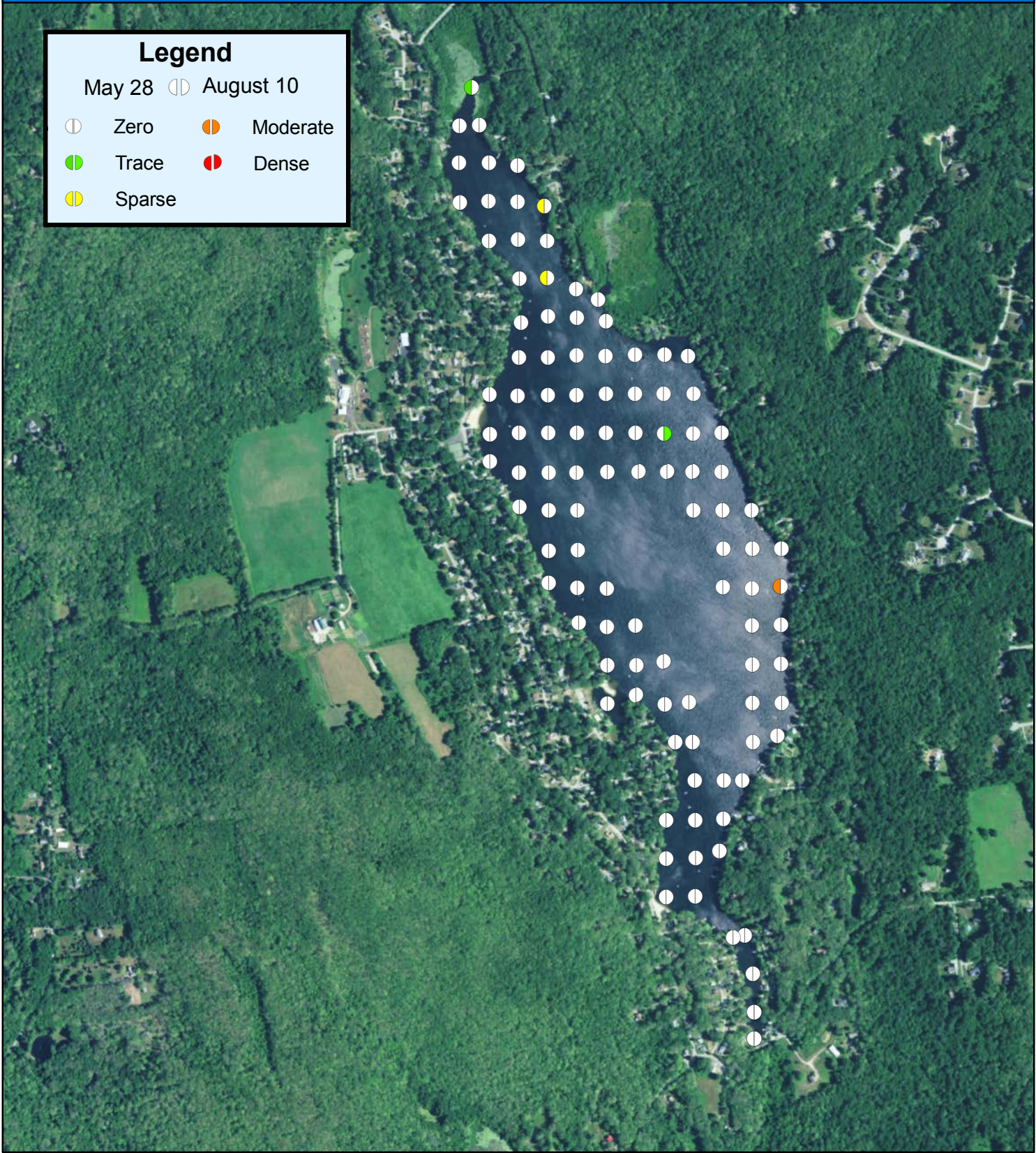
Lake Hayward

0 1,250 2,500
1:12,635 Feet

N

Map Date: 12/22/20
Prepared by: ALM
Office: SHREWSBURY, MA

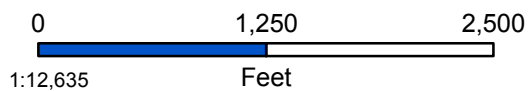
Figure 16: Pre-and-Post-Management Density of Leafy Pondweed (*Potamogeton foliosus*)



Lake Hayward
East Haddam, CT

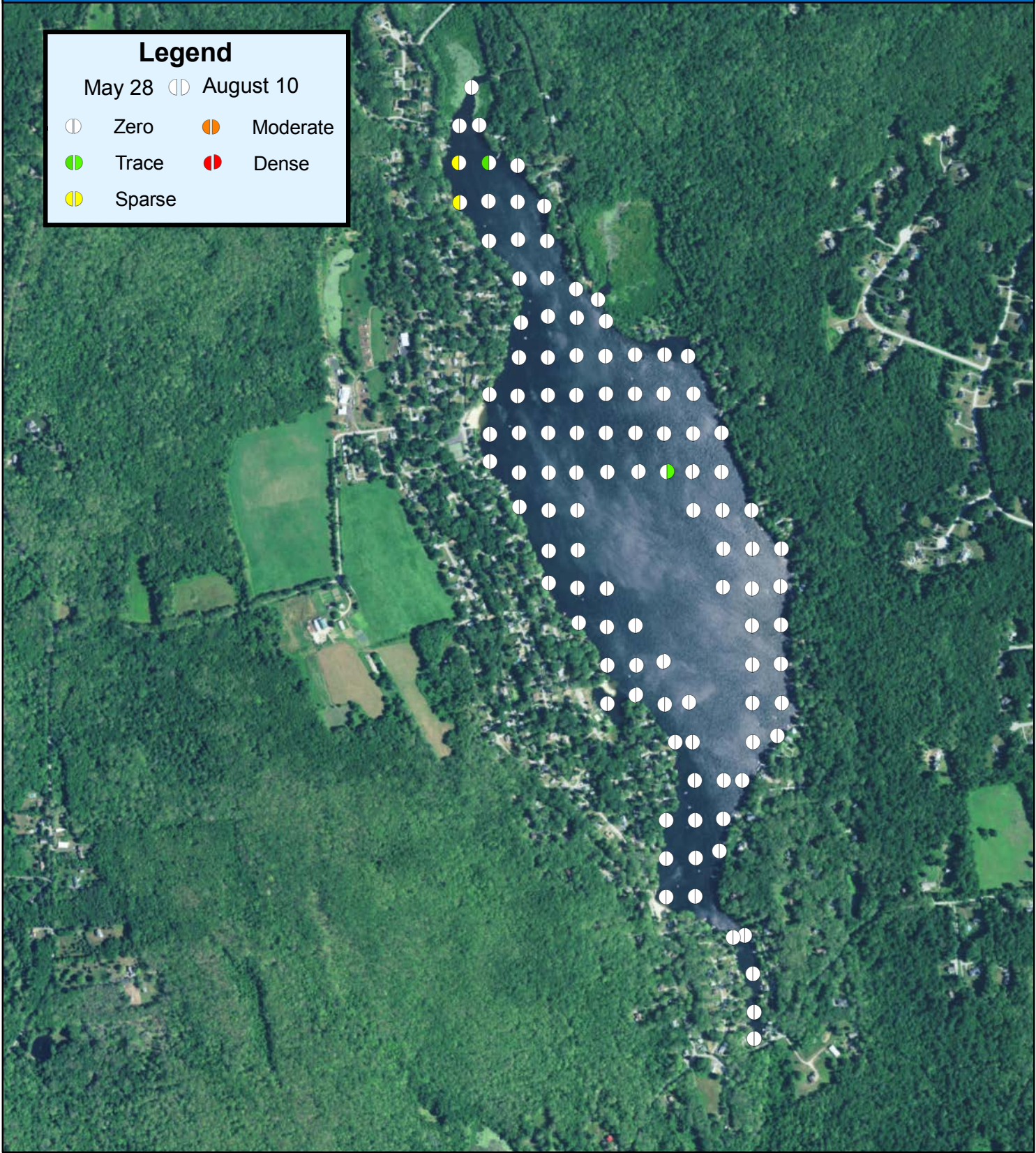


Lake Hayward



Map Date: 12/22/20
Prepared by: ALM
Office: SHREWSBURY, MA

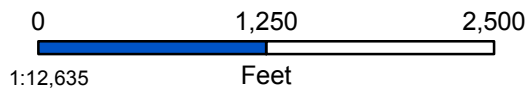
Figure 17: Pre-and-Post-Management Density of Floating Bladderwort (*Utricularia gibba*)



Lake Hayward
East Haddam, CT

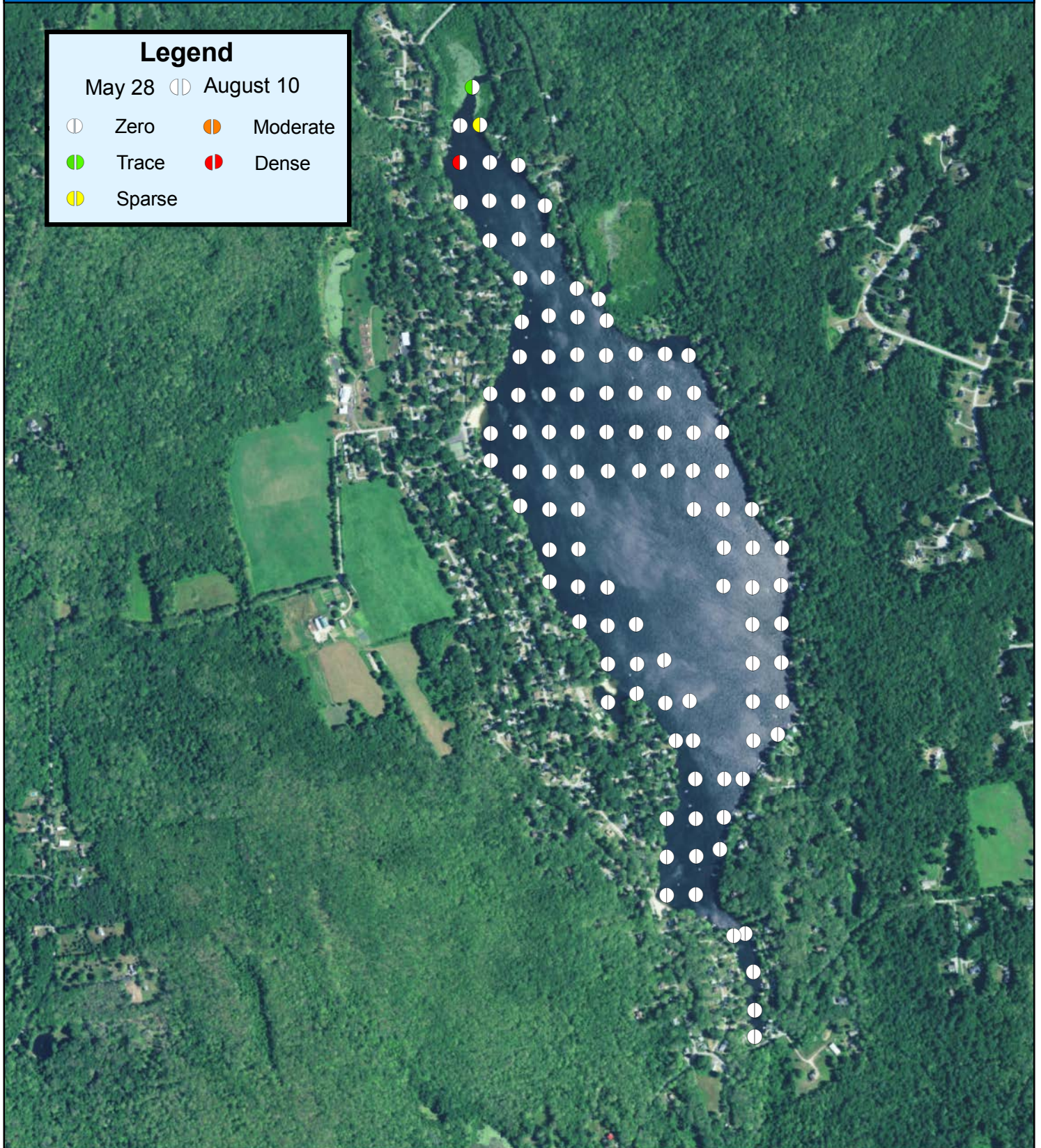


Lake Hayward



Map Date: 12/22/20
Prepared by: ALM
Office: SHREWSBURY, MA

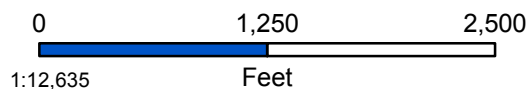
Figure 18: Pre-and-Post-Management Density of Floating Heart (*Nymphodies spp.*)



Lake Hayward
East Haddam, CT

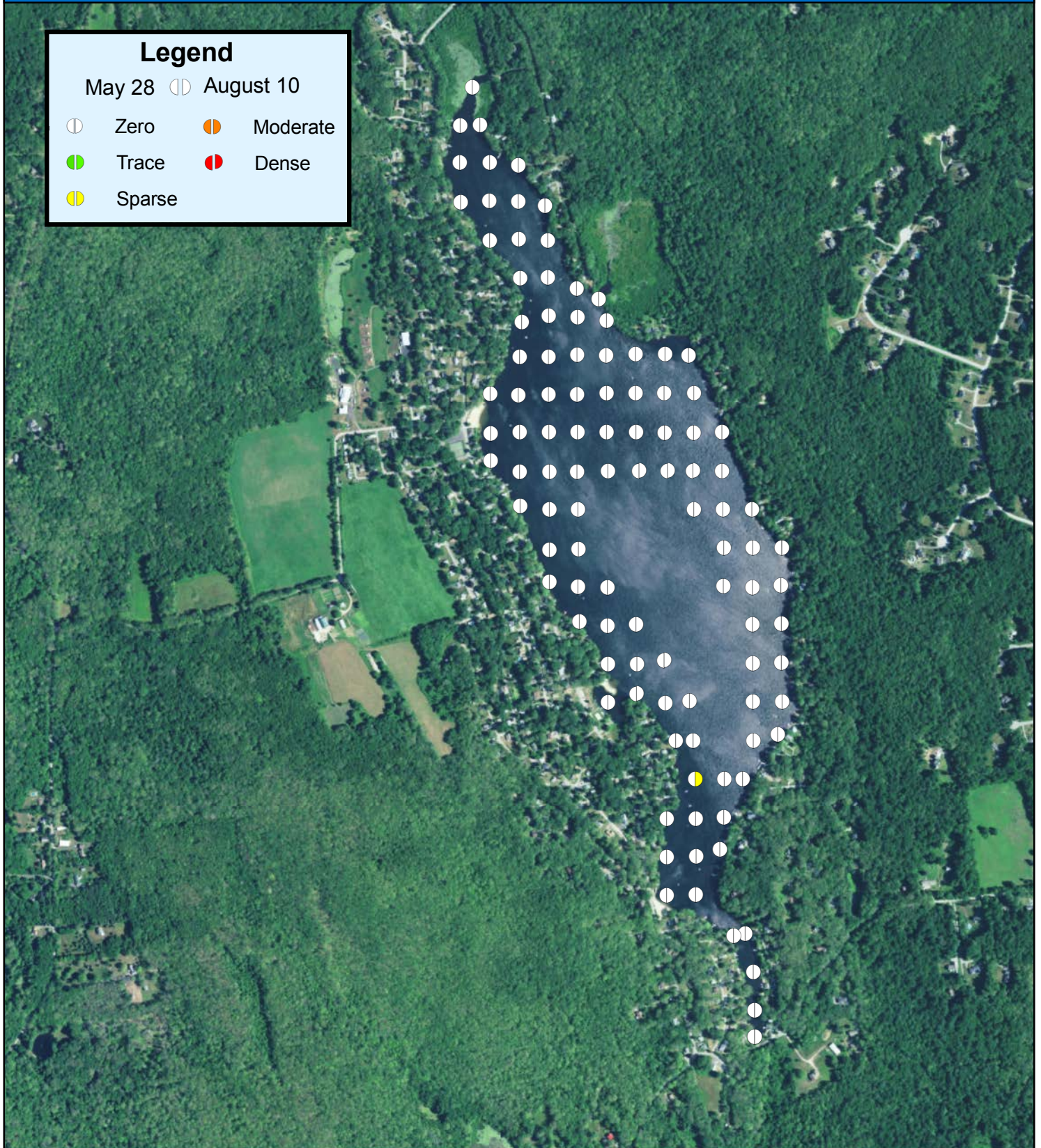


Lake Hayward



Map Date: 12/22/20
Prepared by: ALM
Office: SHREWSBURY, MA

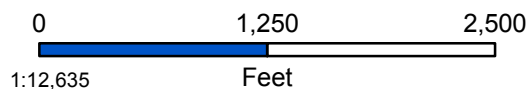
Figure 19: Pre-and-Post-Management Density of Tapegrass (*Vallisneria americana*)



Lake Hayward
East Haddam, CT

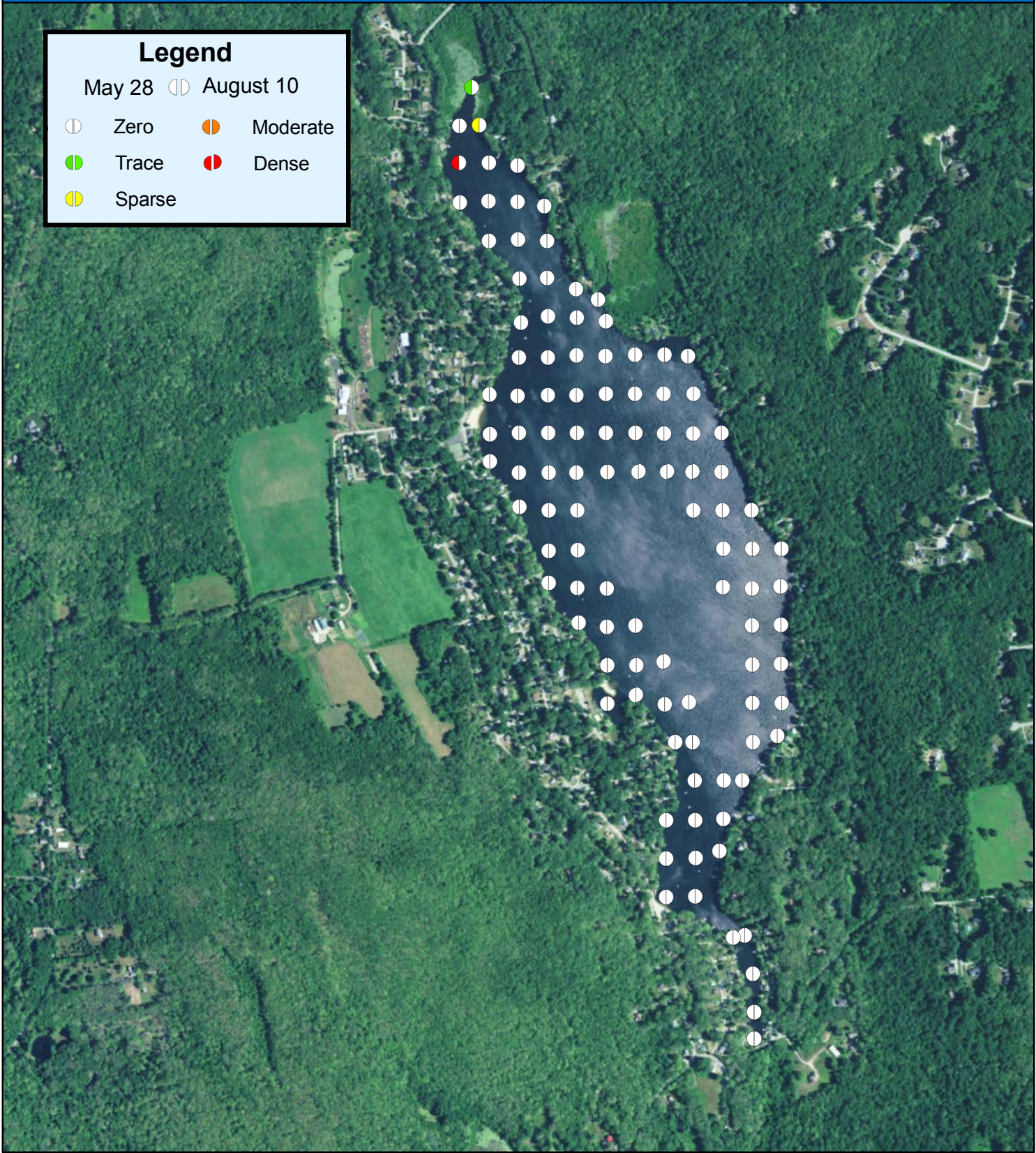


Lake Hayward



Map Date: 12/22/20
Prepared by: ALM
Office: SHREWSBURY, MA

Figure 20: Pre-and-Post-Management Density of Floating Heart (*Nymphodies spp.*)



Legend

May 28	⊕	August 10	⊕
⊖	Zero	⊕	Moderate
⊖	Trace	⊕	Dense
⊖	Sparse		

Lake Hayward
East Haddam, CT

Lake Hayward

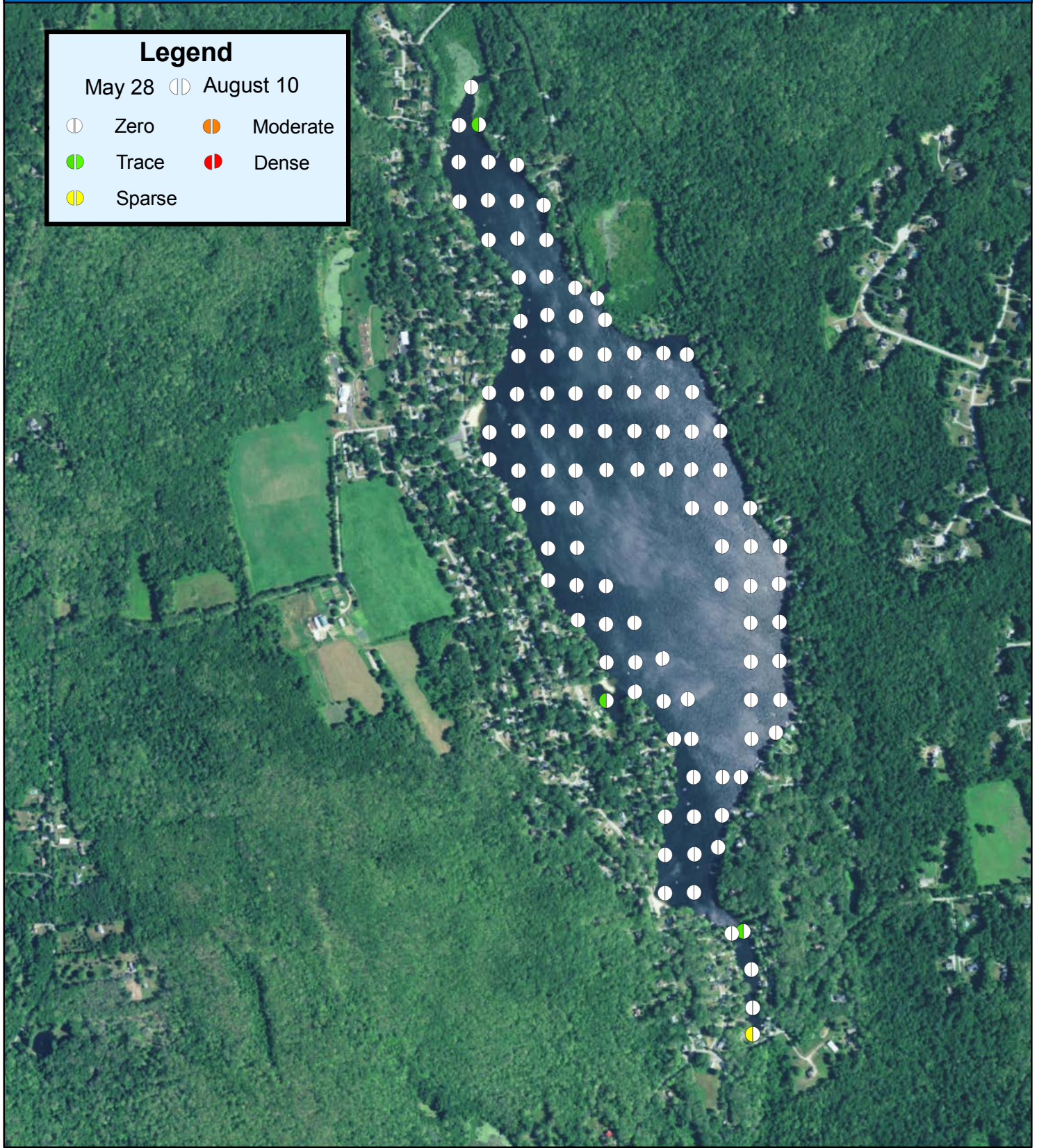
0 1,250 2,500

 1:12,635 Feet

N

Map Date: 12/22/20
 Prepared by: ALM
 Office: SHREWSBURY, MA

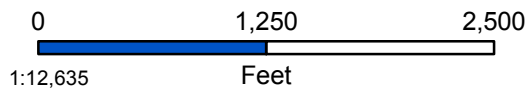
Figure 21: Pre-and-Post-Management Density of Snail-seed Pondweed (*Potamogeton bicupulatus*)



Lake Hayward
East Haddam, CT

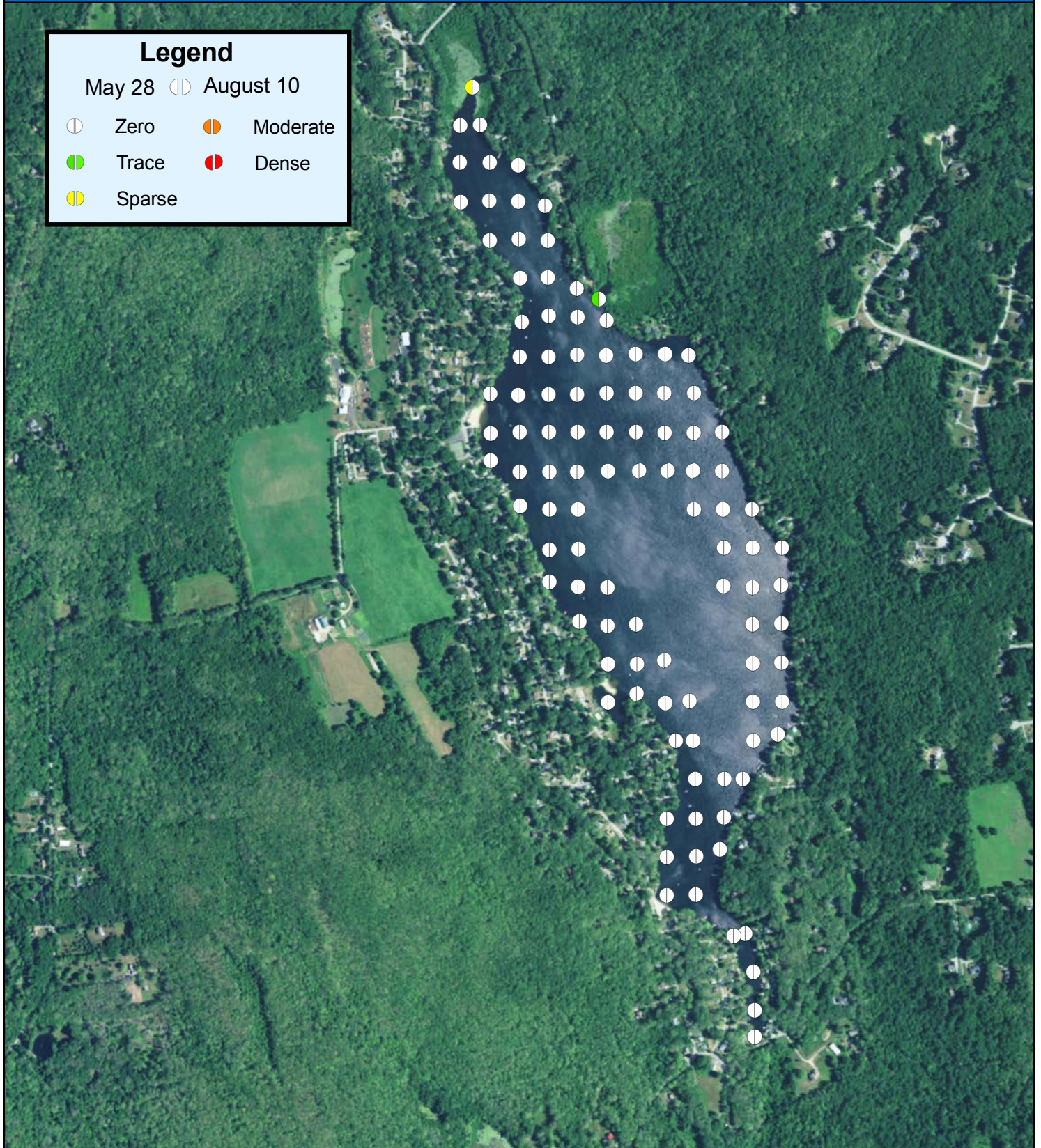


Lake Hayward



Map Date: 12/22/20
Prepared by: ALM
Office: SHREWSBURY, MA

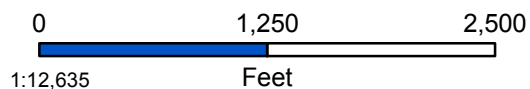
Figure 22: Pre-and-Post-Management Density of Ribbon-leaf Pondweed (*Potamogeton epihydrus*)



Lake Hayward
East Haddam, CT

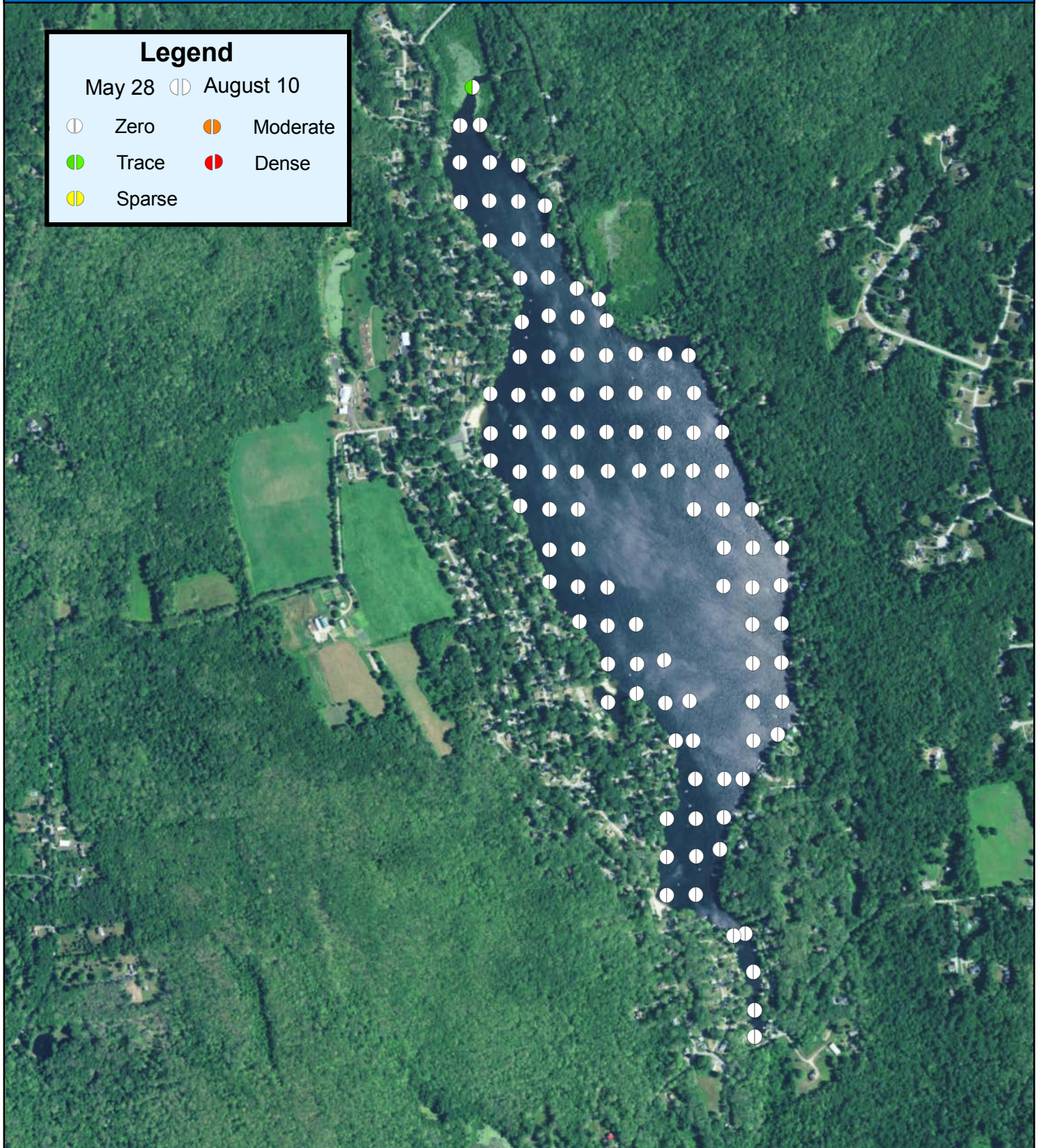


Lake Hayward



Map Date: 12/22/20
Prepared by: ALM
Office: SHREWSBURY, MA

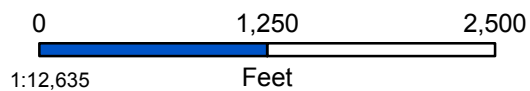
Figure 23: Pre-and-Post-Management Density of Large-leaf Pondweed (*Potamogeton amplifolius*)



Lake Hayward
East Haddam, CT

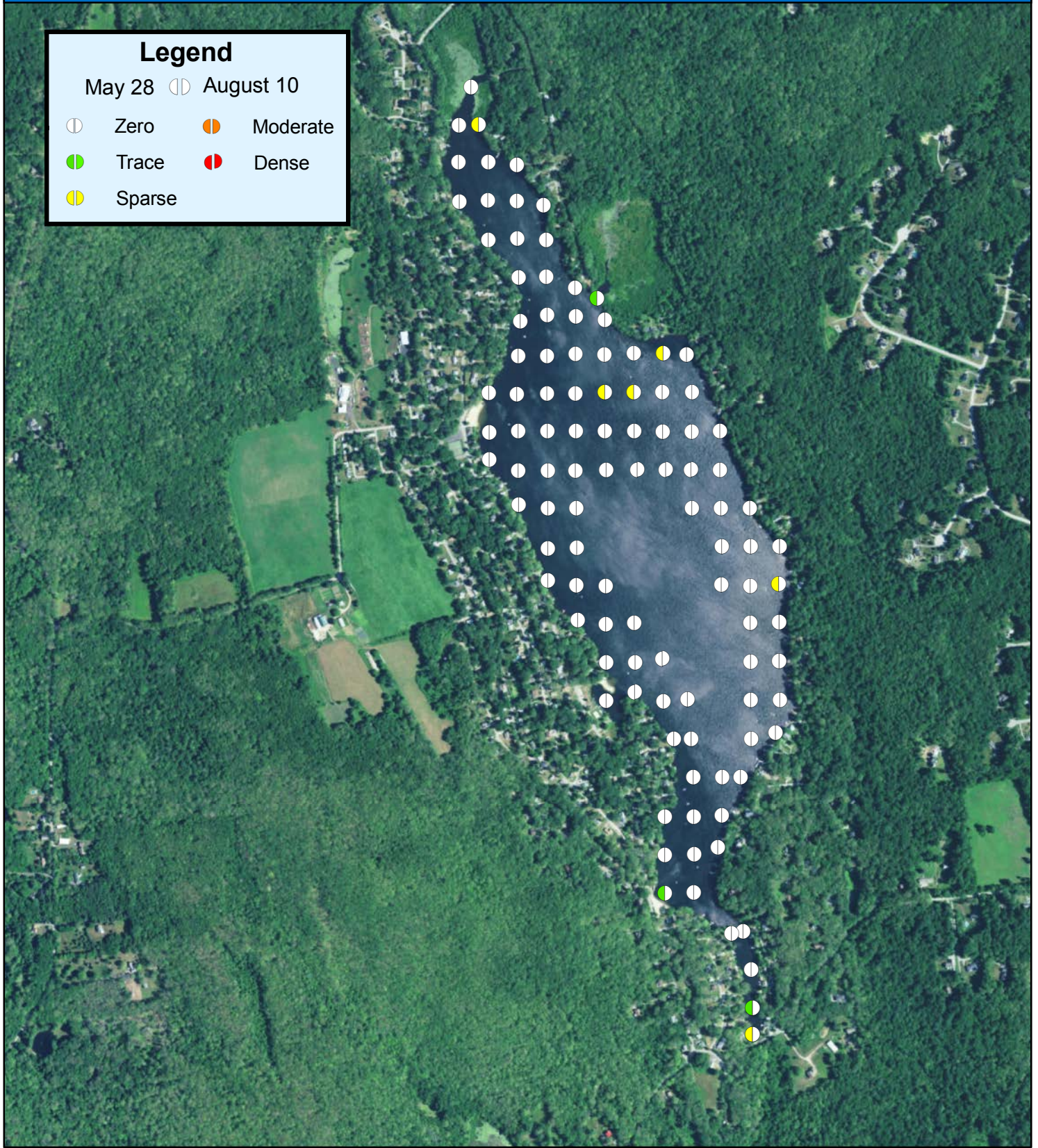


Lake Hayward



Map Date: 12/22/20
Prepared by: ALM
Office: SHREWSBURY, MA

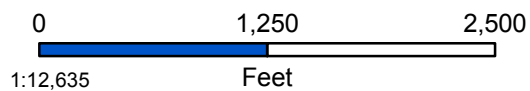
Figure 24: Pre-and-Post-Management Density of Spiral-fruited Pondweed (*Potamogeton spirillus*)



Lake Hayward
East Haddam, CT

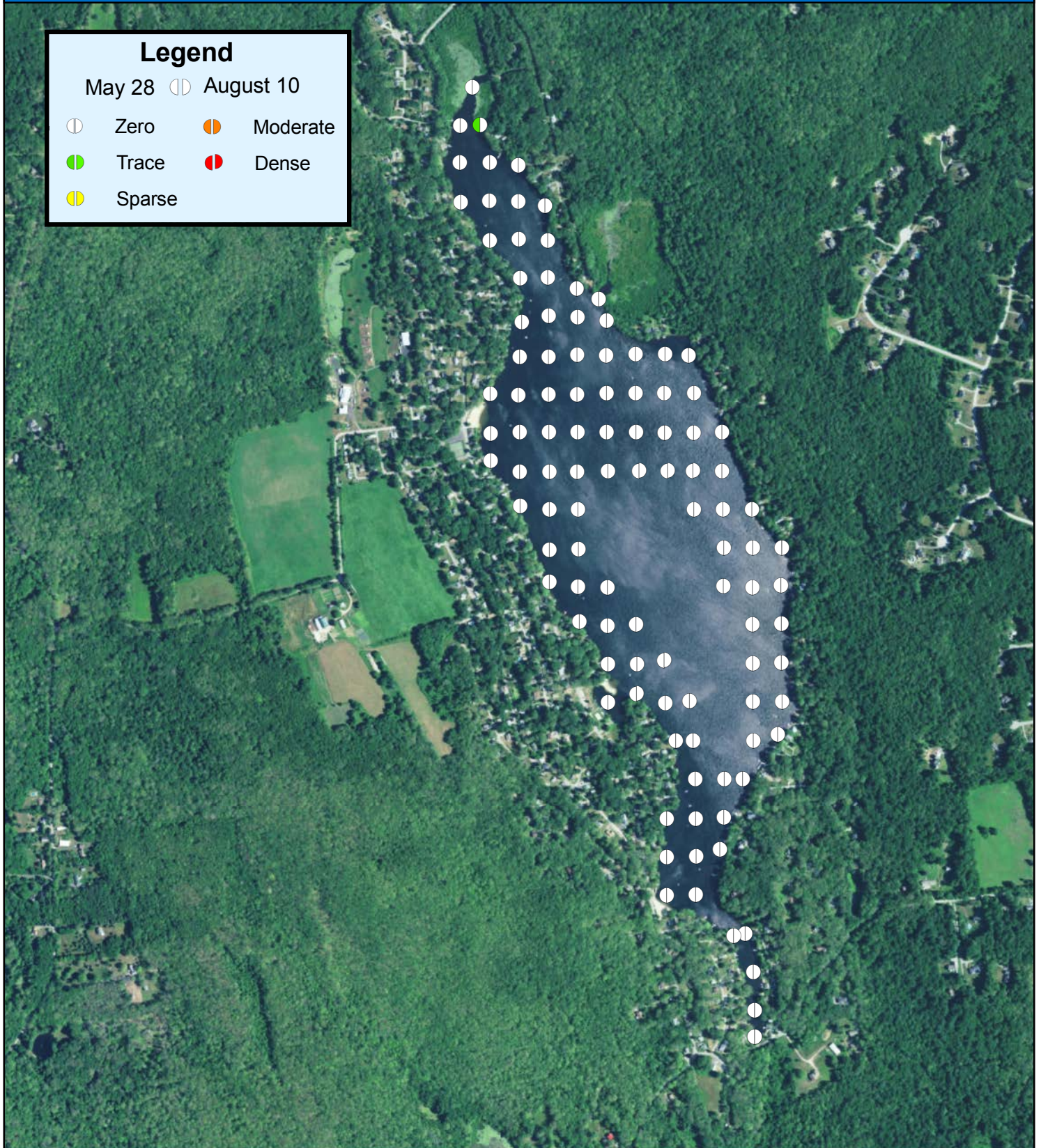


Lake Hayward



Map Date: 12/22/20
Prepared by: ALM
Office: SHREWSBURY, MA

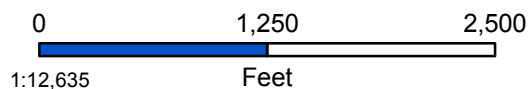
Figure 25: Pre-and-Post-Management Density of Marsh Mermaid-weed (*Proserpinaca palustris*)



Lake Hayward
East Haddam, CT

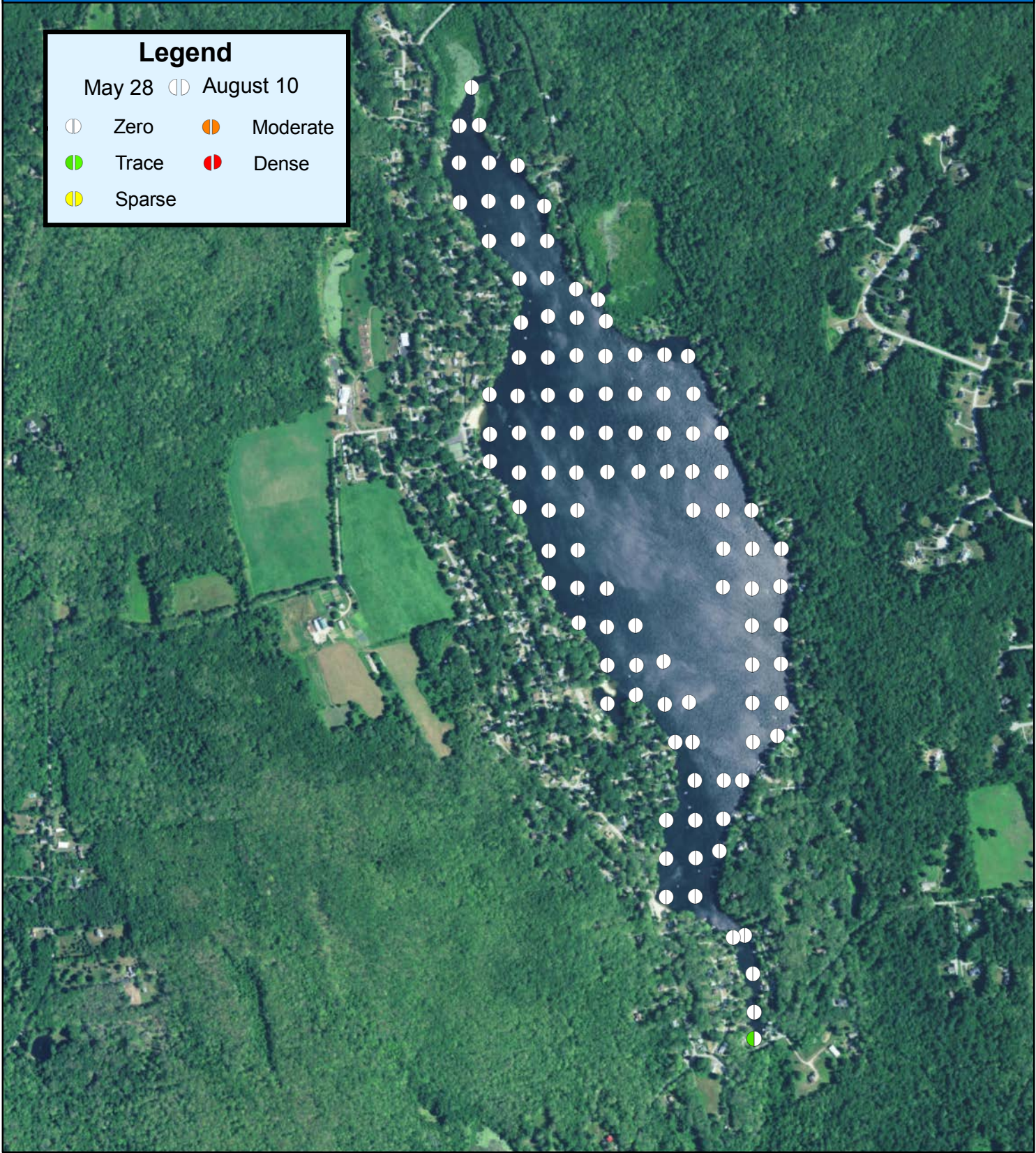


Lake Hayward



Map Date: 12/22/20
Prepared by: ALM
Office: SHREWSBURY, MA

Figure 26: Pre-and-Post-Management Density of Water Starwort (*Callitriche spp.*)



Lake Hayward
East Haddam, CT

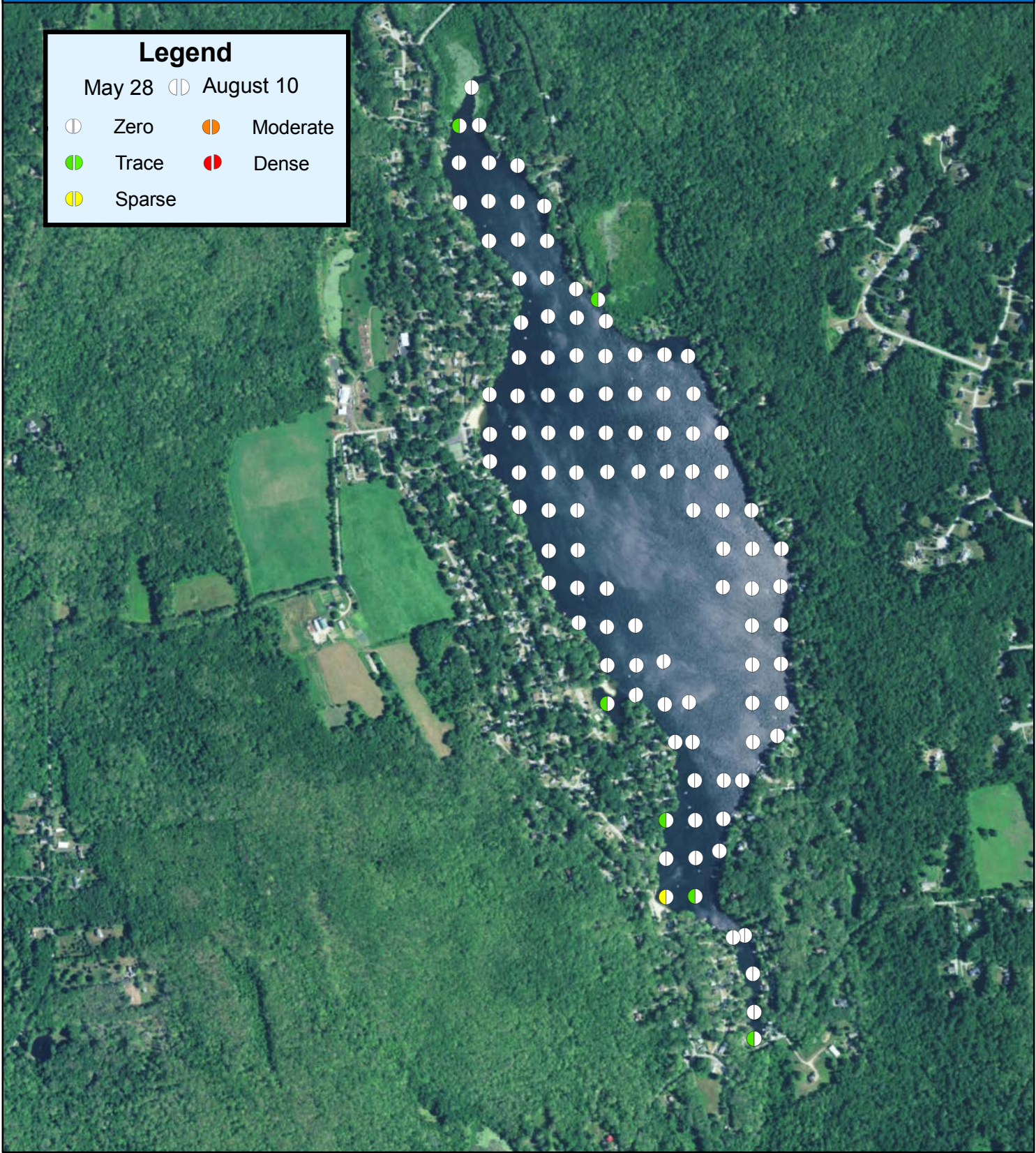
Lake Hayward

0 1,250 2,500
1:12,635 Feet

N

Map Date: 12/22/20
Prepared by: ALM
Office: SHREWSBURY, MA

Figure 27: Pre-and-Post-Management Density of Floating Bur-reed (*Sparganium fluctuans*)



Legend

May 28	⊕	August 10	⊕
⊖	Zero	⊕	Moderate
⊖	Trace	⊖	Dense
⊖	Sparse		

Lake Hayward
East Haddam, CT

Lake Hayward

0 1,250 2,500
1:12,635 Feet

N

Map Date: 12/22/20
Prepared by: ALM
Office: SHREWSBURY, MA

APPENDIX B

Northeast Laboratory Algae Reports

Raw Data



SOLitude Lake Management

590 Lake Street
Shrewsbury, MA 01545

EMAIL ADDRESS: amahaney@solitudelake.com

Table with 2 columns: Report Date, Laboratory ID#, Date Sampled, Date Received, Date Tested.

Sample Site: SURFACE WATER LAKE HAYWARD (NORTH) EAST HADDAM, CT

MICROSCOPIC EXAMINATION == Natural Units Count & Blue/Green Cell Counts

Main table with 10 columns: ORGANISM, #/ml, ORGANISM, #/ml, ORGANISM, Cell #/ml, #/ml, ORGANISM, #/ml. Lists various organisms like Diatomaceae, Chlorophyceae, Cyanophyceae, and Protozoa.

TOTAL NATURAL UNIT COUNT: 360 /ml

BLUE GREEN CELL COUNT: 0 /ml

Comments: Results are based on sample, as submitted to Northeast Laboratories, Inc. on: 6/08/2020.

Approved by: Alan C. Johnson, Lab Director

Northeast Laboratories, Inc. 129 Mill Street Berlin, CT 06037 www.nelabsct.com

Telephone: 860-828-9787 Toll Free (In State) 800-826-0105 (Out of State) 800-654-1230 Fax: 860-829-1050
CT Cert. #PH-0404 EPA Cert. #CT-024 USDA Cert. #0976 FDA Reg. #086650488 CT CSL #0000624



SOLitude Lake Management

590 Lake Street
Shrewsbury, MA 01545

EMAIL ADDRESS: amahaney@solitudelake.com

Table with 4 columns: Report Date, Laboratory ID#, Date Sampled, Date Received, Date Tested.

Sample Site: SURFACE WATER LAKE HAYWARD (SOUTH) EAST HADDAM, CT

MICROSCOPIC EXAMINATION == Natural Units Count & Blue/Green Cell Counts

Main data table with 10 columns: ORGANISM, #/ml, ORGANISM, #/ml, ORGANISM, Cell #/ml, #/ml, ORGANISM, #/ml.

TOTAL NATURAL UNIT COUNT: 350 /ml

BLUE GREEN CELL COUNT: 0 /ml

Comments: Results are based on sample, as submitted to Northeast Laboratories, Inc. on: 6/08/2020.

Approved by: Alan C. Johnson, Lab Director

Northeast Laboratories, Inc. 129 Mill Street Berlin, CT 06037 www.nelabsct.com

Telephone: 860-828-9787 Toll Free (In State) 800-826-0105 (Out of State) 800-654-1230 Fax: 860-829-1050
CT Cert. #PH-0404 EPA Cert. #CT-024 USDA Cert. #0976 FDA Reg. #086650488 CT CSL #0000624



SOLitude Lake Management

590 Lake Street
Shrewsbury, MA 01545

EMAIL ADDRESS: amahaney@solitudelake.com

Report Date:	8/19/2020	Date Sampled:	8/10/2020
Laboratory ID#:	N2081625 - 01	Date Received:	8/10/2020
		Date Tested:	8/14/2020

Sample Site: SURFACE WATER LAKE HAYWARD (NORTH) EAST HADDAM, CT

Cyanophyta:	
Unicellular & Colonial Forms	
Anabaena	
Aphanocapsa	3000
Aphanothece	
Chroococcus	
Dactylococcopsis	
Gomphosphaeria	
Merismpedia	
Microcystis	
Snowella	
Synechococcus/Related	2400
Woronichinia	
Other Cocoid Blue Greens	
Filamentous Non-Nitrogen Fixers	
Arthrospira	
Limonothrix	
Lyngbya	
Limnoraphis	
Microseira/Plectonema	
Oscillatoria	2400
Phormidium	
Planktolyngbya	
Planktothrix	
Pseudanabaena/Kromvophoron	13,000
Spirulina	
Synechocystis	

Filamentous Nitrogen Fixers	
Anabaenopsis	
Aphanizomenon	
Calothrix/Rivularia	
Chrysosporxium	
Cuspidothrix	
Cylindrospermium	
Dolichospermium	
Gloeotrichia	
Hapalosiphon	
Nodularia	
Nostoc	
Raphidiopsis	
Sytonema	
Sphaerospermopsis	
Tolypothrix	
Other Filamentous Bluegreens (L)	
Other Filamentous Bluegreens (S)	
Coelosphoerium	

Total Cell Count: 21,000 / ml

Approved by: Alan C. Johnson
Alan C. Johnson,
Laboratory Director



SOLitude Lake Management

590 Lake Street
Shrewsbury, MA 01545

EMAIL ADDRESS: amahaney@solitudelake.com

Table with 2 columns: Report Date, Laboratory ID#, Date Sampled, Date Received, Date Tested.

Sample Site: SURFACE WATER LAKE HAYWARD - EAST HADDAM, CT

Table with 2 columns: Cyanophyta: Unicellular & Colonial Forms, Filamentous Non-Nitrogen Fixers. Lists various species and their counts.

Table with 2 columns: Filamentous Nitrogen Fixers. Lists various species.

Total Cell Count: 48,000 / ml

Approved by: [Signature]
Alan C. Johnson,
Laboratory Director

Data Point	Depth (Feet)	Biovolume	Percent (%) Cover All	Percent (%) Cover Target	Fanwort	Inflated Bladderwort	Spikerush	Common Bladderwort	Yellow Waterlily	White Waterlily	Floating-Heart	Pipewort	Arrowhead	Filamentous Alga	Stonewort	Leafy Pondweed	Humped Bladderwort	Spiral-fruited Pondweed	Slender Naiad	Snail-seed Pondweed	Watershield	Low Watermilfoil	Ribbon-leaf Pondweed	Mermaid-weed	Floating Burreed	Water Starwort	Big-leaf Pondweed
1	2.0	4	100	45	M	D			S	S	T					T					T	S					T
2	3.5	3	80	35	S	M	T														T					T	
3	2.5	4	100	20	S	D	S		S	S	S		S					S		T	T			T			
4	2.5	1	20	0			S								S				T								
5	3.7	2	100	15	S		D										T										
6	3.6	4	100	25	S		M				D				M		S										
7	4.8	3	85	20	S	S	M								S		S										
8	7.2	2	85	0		S	S								D												
9	9.0	3	70	15	T	T									M												
10	3.1	3	65	25	T	S	S	T						P		S			T								
11	4.1	2	35	5	T			T							S												
12	14.0	2	30	0		T									S												
13	3.5	2	35	10	T	T									S												
14	4.7	1	25	0	T	S									T												
15	12.2	2	35	0											S	S											
16	4.4	1	15	10	T										T												
17	1.5	4	90	80	D		T			T									T	T			T		T		
18	10.0	1	5	5	T																						
19	11.0	1	10	0			T								T												
20	12.3	1	25	0											S												
21	4.8	2	20									S			T												
22	10.7	1	10	0											T												
23	13.0	2	10	0		T									T												
24	10.6	1	10	0											T												
25	11.4	1	5	0											T												
26	3.7	1	80	0											D												
27	6.3	2	25	0		S									T			S									
28	5.8	2	25	0											S			S									
29	4.0	1	25	0											S												
30	13.4	1	60	0											M												

Data Point	Depth (Feet)	Biovolume	Percent (%) Cover All	Percent (%) Cover Target	Fanwort	Inflated Bladderwort	Spikerush	Common Bladderwort	Yellow Waterlily	White Waterlily	Floating-Heart	Pipewort	Arrowhead	Filamentous Alga	Stonewort	Leafy Pondweed	Humped Bladderwort	Spiral-fruited Pondweed	Slender Naiad	Snail-seed Pondweed	Watershield	Low Watermilfoil	Ribbon-leaf Pondweed	Mermaid-weed	Floating Burreed	Water Starwort	Big-leaf Pondweed
31	14.8	1	10	0											T												
32	11.2	1	45	0											M												
33	7.7	1	25	0											S												
34	3.3	1	20	0											S												
35	14.3	1	10	0											T												
36	10.2	1	10	0											T												
37	5.9	0	0	0																							
38	12.5	1	15	0			T								T												
39	14.8	1	5	0											T												
40	14.1	0	0	0																							
41	14.5	0	0	0										P													
42	15.7	2	80	0											D												
43	16.0	2	80	0											D												
44	12.7	2	80	0											D				T								
45	2.8	1	5	0											T												
46	3.0	1	25	0			S							P													
47	5.4	1	10	0											T												
48	9.7	1	30	0											S												
49	14.3	0	0	0																							
50	18.7	0	0	0																							
51	19.5	4	20	0								S															
52	20.8	0	0	0																							
53	16.6	0	0	0																							
54	11.7	0	0	0																							
55	6.0	1	5	0											T												
56	13.8	1	45	0											S												
57	16.6	3	75	25	S	S	M		T	T										T					T		
58	14.6	0	0	0																							
59	6.2	0	0	0																							

Data Point	Depth (Feet)	Biovolume	Percent (%) Cover All	Percent (%) Cover Target	Fanwort	Inflated Bladderwort	Spikerush	Common Bladderwort	Yellow Waterlily	White Waterlily	Floating-Heart	Pipewort	Arrowhead	Filamentous Alga	Stonewort	Leafy Pondweed	Humped Bladderwort	Spiral-fruited Pondweed	Slender Naiad	Snail-seed Pondweed	Watershield	Low Watermilfoil	Ribbon-leaf Pondweed	Mermaid-weed	Floating Burreed	Water Starwort	Big-leaf Pondweed
60	2.9	0	0	0										P													
61	3.0	1	15	0											T												
62	5.1	1	10	5	T										T												
63	8.6	1	5	0											T												
64	5.5	1	10	0		T									T												
65	3.2	4	55	10	T	T				T		M	T												T		
66	5.0	1	5	0											T												
67	6.5	1	30	0											S												
68	16.9	0	0	0																							
69	5.0	1	5	0																					T		
70	5.0	2	30	5	T										D				S								
71	10.5	3	50	15	T	S		T					M							T	T						
72	6.0	2	60	0		S	M																				
73	14.5	2	70	10	T	S				T								T									
74	7.5	2	75	20	T	S												S		S		T			T	T	
75	4.2	1	15	0											T				T								
76	10.3	1	15	0		T									T												
77	3.8	1	30	0											S												
78	3.5	1	10	0			T								T												
79	3.4	0	0	0																							
80	6.2	0	0	0																							
81	6.2	0	0	0																							
82	5.4	1	5	0										P	T												
83	5.0	3	45	0										P	S	M		S									
84	3.5	1	10	0											T												
85	12.7	1	25	0											S												
86	3.5	1	50	0											M												
87	8.8	0	0	0																							
88	10.2	2	50	0		S							S		M				T								
89	4.5	1	10	0											T												

Data Point	Depth (Feet)	Biovolume	Percent (%) Cover All	Percent (%) Cover Target	Fanwort	Inflated Bladderwort	Spikerush	Common Bladderwort	Yellow Waterlily	White Waterlily	Floating-Heart	Pipewort	Arrowhead	Filamentous Alga	Stonewort	Leafy Pondweed	Humped Bladderwort	Spiral-fruited Pondweed	Slender Naiad	Snail-seed Pondweed	Watershield	Low Watermilfoil	Ribbon-leaf Pondweed	Mermaid-weed	Floating Burreed	Water Starwort	Big-leaf Pondweed		
90	21.0	1	80	0											D														
91	17.9	0	0	0																									
92	4.5	0	0	0																									
93	4.7	0	0	0																									
94	6.3	0	0	0																									
95	17.0	0	0	0																									
96	25.0	1	80	0											D														
97	23.5	0	0	0																									
98	18.0	0	0	0																									
99	4.3	1	25	0											S														
100	4.4	0	0	0																									
101	20	3	35	10	T	S	T											T								S			
102	10	2	80	0											D														
103	8	30	0	0											S														
104	8	1	25	0											S														
105	8	0	0	0																									
106	5	2	60	0														S	M										
107		1	25	10	T										S														

Data Point	Depth (Feet)	Biovolume	Percent (%) Cover All	Percent (%) Cover Target	Fanwort	Inflated Bladderwort	Spikerush	Common Bladderwort	Yellow Waterlily	White Waterlily	Floating Heart	Pipewort	Arrowhead	Filamentous Alga	Stonewort	Leafy Pondweed	Tapegrass	Humped Bladderwort
1	2.0	4	80	75	M				D	T								
2	3.5	1	10	0			T											
3	2.5	4	65	15	T		M	S	S		S		S					
4	2.5	1	10	0			T								T			
5	3.7	2	35	5	T		S						S					
6	3.6	2	25	5	T		S											
7	4.8	2	30	0			M	T					S					
8	7.2	1	10	0			T						T					
9	9.0	0	0	0														
10	3.1	0	0	0														
11	4.1	2	15	15		T												
12	14.0	2	35	5	T	S									S			
13	3.5	1	5	0			T											
14	4.7	1	5	0				T										
15	12.2	0	0	0														
16	4.4	0	0	0														
17	1.5	3	40	20	S		S		T									
19	10.0	1	10	0								T			T			
20	11.0	1	30	0											S			
21	12.3	1	30	5		T									S			
22	4.8	1	10	0			T					S						
23	10.7	2	55	15		T	T								M			
24	13.0	0	0	0														
25	10.6	1	20	0											S			
26	11.4	1	15	10	T										S			

Data Point	Depth (Feet)	Biovolume	Percent (%) Cover All	Percent (%) Cover Target	Fanwort	Inflated Bladderwort	Spikerush	Common Bladderwort	Yellow Waterlily	White Waterlily	Floating Heart	Pipewort	Arrowhead	Filamentous Alga	Stonewort	Leafy Pondweed	Tapegrass	Humped Bladderwort
27	3.7	1	10	0			T											
28	6.3	1	15	10	T										T			
29	5.8	0	0	0														
30	4.0	1	5	0			T											
31	13.4	1	15	0											T			
32	14.8	1	15	15	T										T			
33	11.2	0	0	0														
34	7.7	1	10	0												T		
35	3.3	0	0	0														
36	14.3	1	10	0											T			
37	10.2	1	10	0											T			
38	5.9	1	5	0											T			
39	12.5	0	0	0														
40	14.8	1	10	10	T													
41	14.1	1	15	15	T										T			
42	14.5	1	10	10	T													
43	15.7	1	15	5	T										T			
44	16.0	1	15	5		T									T			
45	12.7	1	10	0											T			
46	2.8	1	30	0			S								T			
47	3.0	0	0	0														
48	5.4	0	0	0														
49	9.7	0	0	0														
50	14.3	0	0	0														
51	18.7	0	0	0														

Data Point	Depth (Feet)	Biovolume	Percent (%) Cover All	Percent (%) Cover Target	Fanwort	Inflated Bladderwort	Spikerush	Common Bladderwort	Yellow Waterlily	White Waterlily	Floating Heart	Pipewort	Arrowhead	Filamentous Alga	Stonewort	Leafy Pondweed	Tapegrass	Humped Bladderwort
52	19.5	0	0	0														
53	20.8	0	0	0														
54	16.6	0	0	0														
55	11.7	1	5	0											T			
56	6.0	0	0	0														
57	13.8	0	0	0														
58	16.6	0	0	0														
59	14.6	1	10	0											T			
60	6.2	0	0	0														
61	2.9	1	45	0								S					S	
62	3.0	0	0	0										P				
63	5.1	0	0	0														
64	8.6	1	10	0											S			
65	5.5	1	10	0											T			
66	3.2	2	5	5	T													
67	5.0	0	0	0														
68	6.5	0	0	0														
69	16.9	0	0	0														
70	5.0	0	0	0														
71	5.0	0	0	0														
72	10.5	1	10	0											T			
73	6.0	1	5	0											T			
74	14.5	1	20	0											T			
75	7.5	1	5	0											T			
76	4.2	0	0	0														

Data Point	Depth (Feet)	Biovolume	Percent (%) Cover All	Percent (%) Cover Target	Fanwort	Inflated Bladderwort	Spikerush	Common Bladderwort	Yellow Waterlily	White Waterlily	Floating Heart	Pipewort	Arrowhead	Filamentous Alga	Stonewort	Leafy Pondweed	Tapegrass	Humped Bladderwort
77	10.3	1	5	0											T			
78	3.8	0	0	0														
79	3.5	0	0	0														
80	3.4	1	10	0			T											
81	6.2	1	10	0			T											
82	6.2	0	0	0														
83	5.4	0	0	0														
84	5.0	0	0	0														
85	3.5	1	15	0											T			
86	12.7	1	10	0											T			
87	3.5	1	5	0											T			
88	8.8	1	10	0											T			
89	10.2	1	15	0											T			
90	4.5	0	0	0														
91	21.0	0	0	0														
92	17.9	0	0	0														
93	4.5	1	25	10		T	S											
94	4.7	3	35	10		T	S											
95	6.3	1	25	0											T			T
96	17.0	0	0	0														
97	25.0	0	0	0														
98	23.5	0	0	0														
99	18.0	1	10	0											T			
100	4.3	0	0	0														
101	4.4	0	0	0														

Data Point	Depth (Feet)	Biovolume	Percent (%) Cover All	Percent (%) Cover Target	Fanwort	Inflated Bladderwort	Spikerush	Common Bladderwort	Yellow Waterlily	White Waterlily	Floating Heart	Pipewort	Arrowhead	Filamentous Alga	Stonewort	Leafy Pondweed	Tapegrass	Humped Bladderwort	
102	20	0	0	0															
103	10	1	25	0											S				
104	8	1	10	0			T												
105	8	1	10	0	T														
106	8	1	15	0											T				
107	5	1	25	15		T	S								S				